

# Can Precision Policing Reduce Gun Violence? Evidence from “Gang Takedowns” in New York City

Aaron Chalfin  
Michael LaForest  
Jacob Kaplan

## Abstract

*During the last decade, while national homicide rates have remained flat, New York City has experienced a second great crime decline, with gun violence declining by more than 50 percent since 2011. In this paper, we investigate one potential explanation for this dramatic and unexpected improvement in public safety—the New York Police Department’s shift to a more surgical form of “precision policing,” in which law enforcement focuses resources on a small number of individuals who are thought to be the primary drivers of violence. We study New York City’s campaign of “gang takedowns” in which suspected members of criminal gangs were arrested in highly coordinated raids and prosecuted on conspiracy charges. We show that gun violence in and around public housing communities fell by approximately one third in the first year after a gang takedown. Our estimates imply that gang takedowns explain nearly one quarter of the decline in gun violence in New York City’s public housing communities over the last eight years. © 2021 by the Association for Public Policy Analysis and Management*

## INTRODUCTION

A large literature in both economics and criminology considers the impact of police resources on crime.<sup>1</sup> There is now a strong consensus that the number of police officers (Chalfin & McCrary, 2018; Evans & Owens, 2007; Mello, 2019; Weisburd, 2019), combined with their presence and visibility (Braga & Bond, 2008; Di Tella & Schargrodsky, 2004; Klick & Tabarrok, 2005; MacDonald, Klick, & Grunwald, 2016; Sherman & Weisburd, 1995; S. Weisburd, 2019), reduces crime—at least to a modest degree—and that these impacts are unlikely to be fully explained by increased incapacitation of offenders (Chalfin et al., 2020; Durlauf & Nagin, 2011; Kaplan & Chalfin, 2019; Nagin, 2013; Owens, 2013).<sup>2</sup> These findings—which offer optimism about the effectiveness and scalability of investments in police manpower—characterize the aftermath of a seismic shift in American policing, from an era in which police were primarily reactive, responding to calls for service

<sup>1</sup> This literature features prominently in a number of recent review articles on the topic including those of Nagin (2013) in *Crime & Justice* and Chalfin and McCrary (2017) in the *Journal of Economic Literature*. Other recent reviews of the police-crime literature include those of Lee, Eck, and Corsaro (2016), who review the literature on police manpower and Braga, Hureau, and Papachristos (2014), whose focus is specific to the practice of “hot spots policing.”

<sup>2</sup> There is likewise at least speculative evidence that “problem-oriented policing” approaches, in which police officers systematically leverage a more expansive set of crime prevention strategies, can lead to additional benefits to public safety (Braga et al., 1999; Weisburd et al., 2010).

while spending most of their time in a patrol car, to an era in which police officers are expected to play an active role in preventing crimes.<sup>3</sup>

Based on research showing that visible police presence in hot spots leads to crime reductions without displacing crimes to adjacent areas (Braga, Hureau, & Papachristos, 2014; Weisburd, 2005) and that today's misdemeanor arrests prevent tomorrow's felony crimes (Corman & Mocan, 2005; Kelling & Sousa, 2001; Messner et al., 2007), police departments have, over the last 40 years, doubled down on the philosophy of broken windows policing, deploying large numbers of police officers to high-crime areas, often with explicit instructions to engage in large numbers of street stops and field interrogations (MacDonald, Fagan, & Geller, 2016).<sup>4</sup> In recent years, public officials and members of the public at large have expressed concern that policing strategies involving the intensive use of directed patrol and field interrogations may create high collateral costs for disadvantaged communities (Bandes et al., 2019; Butler, 2014; Weitzer, Tuch, & Skogan, 2008), a problem that Bratton and Anderson (2018) refer to as the "great divide in American policing." Likewise, recent scholarship has documented that mass enforcement policies have widened the net of the criminal justice system (Hagan & Dinovitzer, 1999; Howell, 2009; Kohler-Hausmann, 2018), leading to an increase in discriminatory practices that have had disproportionate impacts on minority communities (Gelman, Fagan, & Kiss, 2007; Goel, Rao, & Shroff, 2016; Goncalves & Mello, 2017). Owing perhaps to increased media coverage of police shootings and political movements such as *Black Lives Matter*, in recent years, public support for police had fallen to its lowest levels in 30 years despite the dramatic decline in crime since the 1990s.<sup>5</sup>

In response to concerns about the collateral consequences of mass enforcement, one of the most salient changes in American policing in recent years is the shift to a more surgical form of "precision policing" (Bratton & Anderson, 2018; Taylor, Koper, & Woods, 2011) in which law enforcement focuses available resources on a small number of individuals who are thought to be the primary drivers of violence. Made possible by the same data-mining technologies that have been used to target law enforcement to high-crime locations (Braga, Hureau, & Papachristos, 2014; Johnson & Bowers, 2008; Ratcliffe, 2004), targeting enforcement to high-risk individuals is a strategy that has been employed by a number of large law enforcement agencies during the last decade. However, nowhere has the shift from mass enforcement to precision policing been more prominent than in New York City (NYC).

During the period from 2002 to 2011, the number of official street stops made by New York Police Department (NYPD) officers each year increased by nearly an order of magnitude from 97,000 to 680,000. In the aftermath of federal litigation that declared these and other related practices to be unconstitutional, the number of stops made by NYPD officers each year declined to just 12,000 five years later.<sup>6</sup>

<sup>3</sup> This dramatic shift in policing philosophy is famously evangelized in James Q. Wilson and George Kelling's seminal public essay, *Broken Windows*, published in 1982 in *The Atlantic Monthly*, which argues that public safety cannot be effectively maintained unless police officers are actively involved in addressing physical and social disorder and enforcing community norms.

<sup>4</sup> The conclusion that crime declines in New York City during the 1990s were fueled by an increase in police activity as proxied by misdemeanor arrests has been called into question persuasively in a critique by Harcourt and Ludwig (2006). The idea that misdemeanor crimes have a causal effect on next period's felony crimes has likewise been called into question by Caetano and Maheshri (2018). We cite the literature above in recognition that the findings were persuasive to policymakers even if there continues to be active debate about the credibility of the empirical findings.

<sup>5</sup> See <https://news.gallup.com/poll/317114/black-white-adults-confidence-diverges-police.aspx>.

<sup>6</sup> These statistics are tabulated from official "stop, question and frisk" records made public by the NYPD. Naturally, there are concerns about the accuracy of the data. We note that even if just 20 percent of the street stops made by police officers in 2016 were documented in the data, the decline in street stops relative to 2011 would still be on the order of 90 percent.

Around the same time, the NYPD, in partnership with the city's five district attorney's offices and, in some cases, federal prosecutors in New York's southern and eastern districts, began to invest more heavily in a precision policing strategy to confront serious crime and violence. In particular, there was a sustained increase in targeted enforcement actions against criminal gangs, often centered around the city's public housing communities (Howell, 2015). These "gang takedowns," as they are often referenced colloquially, refer mainly to coordinated raids in which members of criminal gangs were arrested for specific felony crimes or, commonly, for conspiracy charges related to their alleged membership in a criminal organization that is under investigation. Many of the charges relate to the sale of drugs but there are also numerous charges for violent crimes. Indeed, a stated goal of the takedowns is to focus on individuals who are the drivers of violence, with a particular emphasis on gun violence (Shea, 2018).

This research evaluates the effectiveness of the city's targeted gang raids in reducing crime in and around its public housing developments. While NYC is not the only city to engage in coordinated enforcement actions against criminal gangs, the city's recent experience is uniquely suited to understanding the effectiveness of the pursuit of a precision policing strategy at scale. A second feature of our natural experiment is that it allows us to study the effectiveness of adopting a surgical policing strategy in the aftermath of a regime switch. Our findings are thus instructive for other cities that have moved away from a mass enforcement policing regime in recent years. Finally, while related research has studied a variety of deterrence-focused strategies that empower law enforcement to disrupt gang activity, this is the first research to consider the impact of coordinated gang takedowns, a policy lever that is focused disproportionately on incapacitation.

We focus on public housing communities for several reasons. First, ethnographic evidence suggests that due to fixed features of the social and physical environment, crime is often "coupled to place" (Weisburd, Groff, & Yang, 2014). This is particularly true of public housing where, due to high levels of social isolation, crime is persistently high without attracting violence from non-local offenders or generating violence in surrounding neighborhoods (Griffiths & Tita, 2009). Second, public housing communities consist of some of the city's most disadvantaged households. While these communities are home to approximately 7 percent of New Yorkers, they account for nearly 15 percent of the city's index crimes (Chalfin et al., 2021). Third, in NYC, there is a particularly close nexus between public housing communities and street gangs with many street gangs having origins in and ongoing ties to a particular housing community. Consequently, the city's housing communities account for a substantial portion of all gang takedowns. Finally, while crime is persistently high in public housing, with the exception of a field experiment involving street lighting (Chalfin et al., 2021), the recent literature offers little guidance for how crime, especially violent crime, can be reduced in these communities.

We begin by showing that while gang takedowns tend to occur in some of the city's most violent communities, their precise timing does not appear to be related to prior crime or enforcement trends. Next, using a differences-in-differences strategy paired with an event study framework, we show that shootings in public housing communities fell by approximately one third in the aftermath of a gang takedown and that the reduction in shootings persists for up to 18 months after a gang takedown occurs. Overall, we estimate that gang takedowns explain nearly one quarter of the decline in gun violence in and around New York City's public housing communities during the post-2011 period. Critically, we do not find evidence that the effectiveness of the takedowns is mitigated by the displacement of crime to adjacent areas or that the takedowns lead to a subsequent increase in enforcement activity in the affected communities.

Beyond identifying the effectiveness of the gang takedowns in controlling violence, this research has implications for both popular and scholarly understanding of NYC's second great crime decline during the 2011 to 2016 period, a period in which the city's shooting and homicide rates had declined by approximately 50 percent. Recent research has posited that NYC's drop in major crimes is the direct result of the winding down of its mass enforcement regime, the implication being that the intensive use of street stops and field interrogations was itself crime-creating (Sullivan & O'Keeffe, 2017). While such a claim is potentially credible, policymakers, including former NYC Police Commissioner James O'Neill, have implicated the NYPD's aggressive anti-gang initiatives as a driver of NYC's exceptionalism, noting that the city's decline in shootings has been driven by an especially large decline in gang-related violence (Bruinius, 2018; Mueller & Baker, 2017). This research suggests that the NYPD's intensive targeting of criminal gangs appears to be an important driver of the decline in gun violence in NYC after 2011. Our findings thus cast doubt on the proposition that the city's second great crime decline was driven directly by the end of its mass enforcement regime and suggest an alternative means through which gun violence was reduced in NYC during the last decade.

## PRIOR LITERATURE

Precision policing is a broad umbrella under which a number of potential policing strategies might be classified. We begin by noting that while "hot spots" policing has, in practice, often been paired with a policy of mass enforcement (MacDonald, Klick, & Grunwald, 2016), the increased concentration of police resources at identifiable hot spots is itself a form of precision policing.<sup>7</sup> Recognizing that an outsize share of crimes cluster at a small number of predictable places (Bernasco & Steenbeek, 2017; Braga & Clarke, 2014; Sherman, Gartin, & Buerger, 1989; Weisburd, 2015), municipal police departments in recent years have hired increasing numbers of crime analysts to map administrative crime data and have established COMPSTAT programs in order to provide managerial support for data-driven crime reduction strategies, often centered on criminogenic places (Walsh, 2001; Weisburd et al., 2003). Recent reviews of the literature on hot spots policing, which includes a number of well-executed randomized experiments (Braga & Bond, 2008; Groff et al., 2015; Sherman & Weisburd, 1995), find that these efforts have generally been successful in reducing crime without displacing crime to adjacent areas (Braga, 2005; Braga, Hureau, & Papachristos, 2014).

To date, many of the most surgical forms of precision policing have involved targeted enforcement against criminal gangs. Targeted gang enforcement has a long tradition in American policing and indeed is one of the chief motivations for the creation of the Federal Bureau of Investigation (FBI) in 1933. In the modern era, policymakers have experimented with the provision of both "carrots" and "sticks" in developing precision responses to gang violence. Carrots include offers of social services and other types of programmatic assistance, including educational programming (Cook et al., 2015; Heller et al., 2017) and employment opportunities (Davis & Heller, 2020; Gelber, Isen, & Kessler, 2016; Heller, 2014) for high-risk youth. Sticks include highly targeted gang enforcement programs that are sometimes paired with the explicit threat of such enforcement. Among the many stick-based approaches has been the use of civil "gang injunctions," a place-based policy that is intended to widen the

<sup>7</sup> The increasing use of hot spots policing has been made possible by the increasing availability of large administrative data sets and, critically, the ability to analyze them. Leveraging "big data," police resources have been focused more intensively and visibly on crime hot spots.

scope for local law enforcement to crack down on alleged gang members (Grogger, 2002; Hennigan & Sloane, 2013; Muniz, 2014; Ridgeway et al., 2019), truancy and curfew enforcement (Carr & Doleac, 2018; Fritsch, Caeti, & Taylor, 1999) and the monitoring of suspected gang members, using electronic surveillance (DeMichele, 2014; Deuchar, 2012) and social media (Balasuriya et al., 2016; Behrman, 2015; Patton et al., 2017).

Perhaps the most transformational policy in the area of gang enforcement in the last three decades is “pulling levers” strategies, most famously exemplified by *Operation Ceasefire* (Kennedy, Braga, & Piehl, 2001) and the long lineage of similar interventions that have been inspired by its success in Boston (Braga, Hureau, & Papachristos, 2014; Braga et al., 2001). While the execution of these strategies varies from jurisdiction to jurisdiction, the underlying principle is to enlist various criminal justice system actors to “pull every lever” in confronting gang violence. “Pulling levers” programs combine an enhanced law enforcement focus on gang activity, particularly around illegal firearm markets, with activities that are designed to promote “focused deterrence.” Examples of focused deterrence-based strategies include explicitly prioritizing enforcement resources on the most violent gangs and reaching out directly to gang members either individually or via group call-ins. There is now a myriad of quasi-experimental studies that test the efficacy of pulling levers-inspired strategies in a number of U.S. cities including Baltimore (Webster et al., 2013), Chicago (Papachristos, Meares, & Fagan, 2007), Cincinnati (Engel, Tillyer, & Corsaro, 2013), High Point, NC (Corsaro et al., 2012), Indianapolis (McGarrell et al., 2006), Newark (Boyle et al., 2010), New Orleans (McVey et al., 2014), Phoenix (Fox et al., 2015), Richmond, VA (Raphael & Ludwig, 2003; Rosenfeld, Fornango, & Baumer, 2005), and Rockford, IL (Corsaro, Brunson, & McGarrell, 2013), among others. Overall, the evidence tends to support the efficacy of these programs in the United States (Braga & Weisburd, 2012) though it is worth noting that the explicit targeting of criminal gangs may have been far less successful in countries with weaker political institutions (Dell, 2015; Espinosa & Rubin, 2015; Ríos, 2013).<sup>8</sup>

Precision policing practices that are focused on specific individuals have begun to proliferate in recent years. However, scholarship has been scant. One exception is research on the Chicago Police Department, which, in partnership with researchers at the Illinois Institute of Technology, created a “strategic subjects list” of Chicago residents selected based on the expected risk of being shooting-involved in the future (Saunders, Hunt, & Hollywood, 2016).<sup>9</sup> This research found little evidence that the interventions applied to individuals named on the strategic subjects list—namely home visits and an offer of social services—led to enhanced public safety. However, the researchers have raised questions about the extent to which these interventions were actually deployed in practice.

The gang takedowns we study are most similar to stick-based approaches such as gang injunctions insofar as both approaches are intended to provide law enforcement with greater leeway to deal with the unique challenges posed by criminal gangs. However, while gang injunctions are a civil law-based tool that are intended to empower street-level officers to disrupt gang activity such as graffiti or groups

<sup>8</sup> More recently, a number of jurisdictions have created programs that employ “gang interrupters,” typically individuals who are former gang members and are therefore credible messengers in an effort to reduce retaliatory violence. This strategy marketed under the *Cure Violence* umbrella constitutes an approach to gang violence that is more public health-oriented than law enforcement-oriented (Butts et al., 2015a; Slutkin, Ransford, & Decker, 2015). The *Cure Violence* program has been evaluated in New York City, yielding promising albeit early results (Butts et al., 2015b; Picard-Fritsche & Cerniglia, 2013).

<sup>9</sup> Person-focused enforcement strategies have raised a number of legal questions that legal scholars are only beginning to untangle—see, e.g., Tucek (2018).



of suspected gang members “hanging out” in a particular area, NYC’s gang takedowns are more specifically designed to immediately incapacitate gang members. Moreover, the takedowns are not directed by patrol officers. Instead, they are the result of months and sometimes years-long investigations by detectives in cooperation with NYC’s district attorney’s offices. The underlying theory of change then is less behavioral and more mechanical with authorities relying on the idea that the number of individuals in a community who are willing to engage in gang-based violence is finite and that this population is not easily replaced (Blumstein, 1993; Piquero & Blumstein, 2007), at least in the short-run, when suspected gang members are incapacitated. A second feature of NYC’s campaign of gang takedowns is worth noting. While prior enforcement strategies such as gang injunctions and pulling levers (and even previous campaigns of gang takedowns in NYC and elsewhere) have been implemented largely alongside mass enforcement strategies, NYC’s gang takedowns have been implemented in the aftermath of a court-ordered end to the NYPD’s mass enforcement policy that predominated during the 1990 to 2010 period.

## INSTITUTIONAL BACKGROUND

### New York City’s Second Great Crime Decline

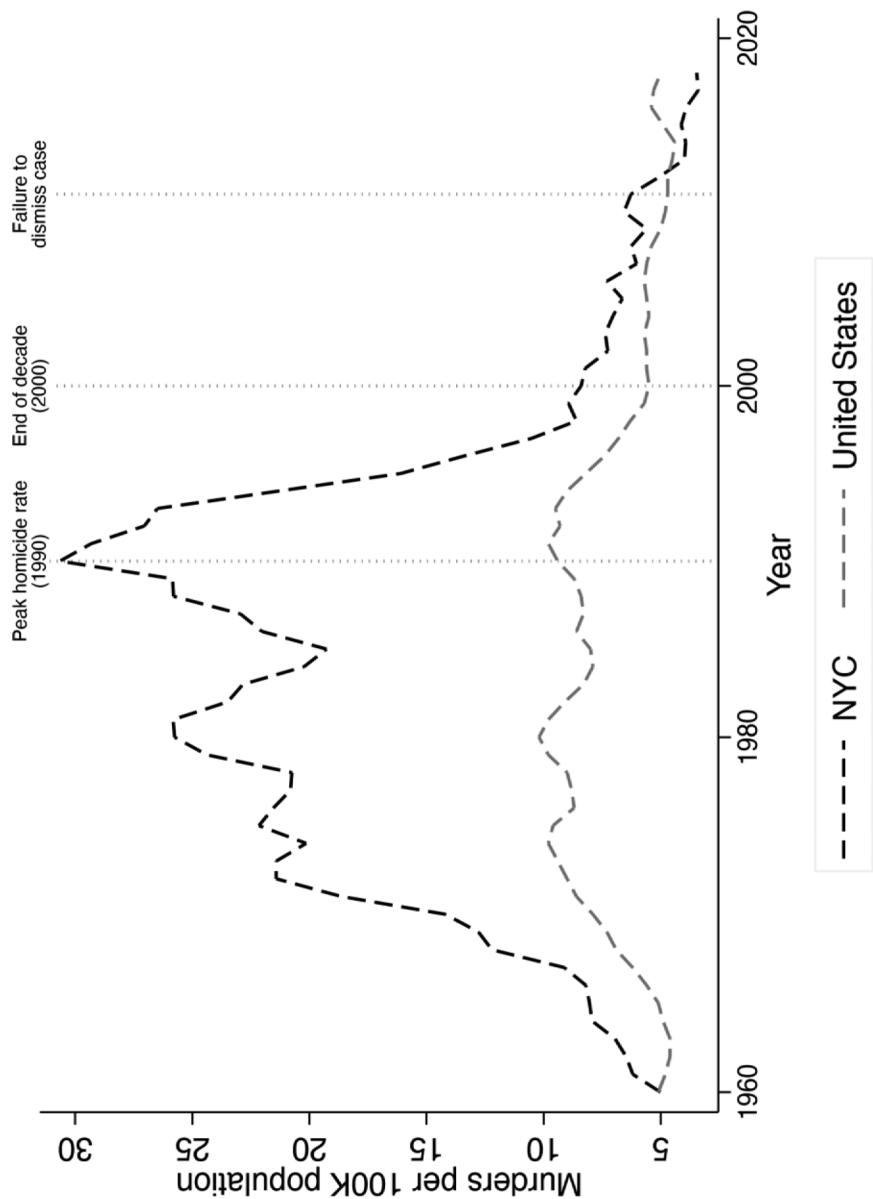
The dramatic decline in crime during the 1990s in the United States and other industrialized countries has been a topic of considerable discussion among social scientists (Baumer & Wolff, 2014; Blumstein, Wallman, & Farrington, 2006; Lafree, 2000).<sup>10</sup> While the causes of the “Great Crime Decline” have yet to be fully explained, scholars have proposed a number of candidate factors including larger police forces (Chalfin & McCrary, 2018; Mello, 2019; Owens, 2013; Weisburd, 2019), increased use of incarceration (Blumstein & Rosenfeld, 2008; Levitt, 1996; Zimring, 2008), the receding crack epidemic (Fryer Jr et al., 2013), increases in immigration (Sampson, 2008), shifts in technology (Ayres & Levitt, 1998; Farrell et al., 2011; Farrell & Birks, 2018), lead paint eradication (Billings & Schnepel, 2018; Reyes, 2007) and the mass availability of safe and legal abortion (Donohue III & Levitt, 2001).

In New York City, which experienced a steep rise in its crime rate from 1960 to 1990, violent crime declined to an especially large degree—far larger than the national decline and larger than among any other large U.S. city (Weisburd, Telep, & Lawton, 2014; Zimring, 2011). These trends are explored in Figure 1, which plots the number of murders per 100,000 individuals for New York City as well as for the United States as a whole for the 1960 to 2018 period.<sup>11</sup> NYC’s murder rate peaked at just over 30 murders per 100,000 residents in 1990. By 2000, the rate had declined by 73 percent to 8.4 murders per 100,000 individuals. By 2018, New York City, whose homicide rate had been 60 percent higher than the national average even after the great crime decline of the 1990s, had a homicide rate that was one third *lower* than the national average.

The latter point underscores a critical but underappreciated feature of the great crime decline in New York City—rather than ending in 2000, NYC’s crime rate, for serious crimes involving firearms, in particular, has continued to decline to the

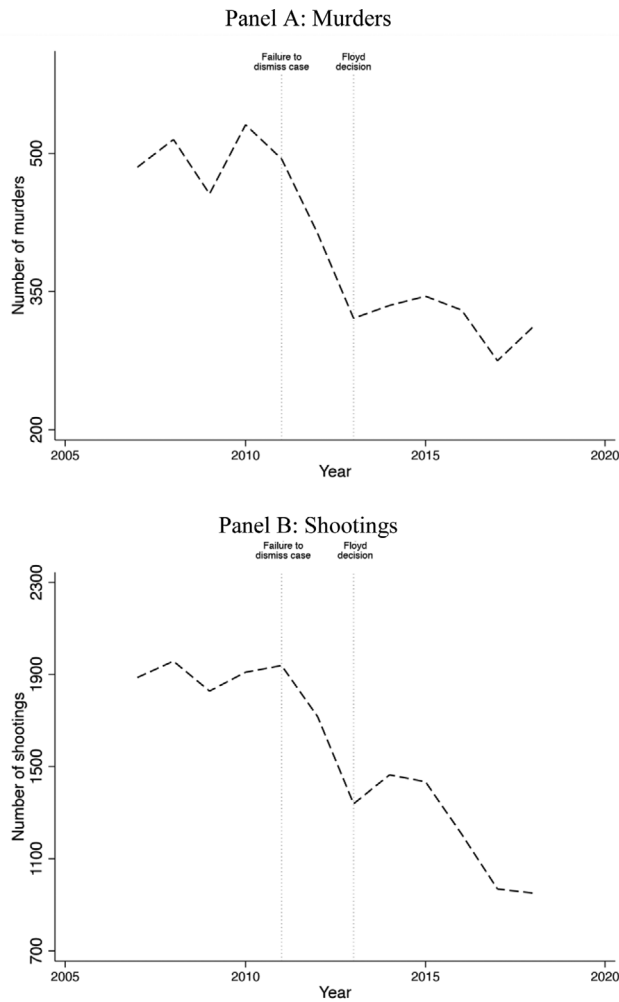
<sup>10</sup> In the United States, per capita index crimes in 2000 were nearly 30 percent lower than they had been in 1990 and, by 2010, the index crime rate had fallen by another 10 percent. The decline in homicide was even greater with murders declining by 40 percent during the 1990s and by another 10 percent during the decade spanning 2000 to 2010.

<sup>11</sup> We focus on murders as they are particularly well-documented (Loftin & McDowall, 2010) and, as such, are a reliable means to compare crimes over time.



Notes: Figure plots the number of murders per 100,000 population in New York City and in the United States from 1960 until 2018 according to the Federal Bureau of Investigation's Uniform Crime Reporting program. Data were accessed from Jacob Kaplan's "Crime Data Tool" at the following URL: <https://jacobdkaplan.com/>. In the figure, there are vertical lines corresponding to 1990, the year in which NYC's homicide rate peaked and 2000, the end of the decade as well as 2011 which is the beginning of our sample period.

**Figure 1.** Trends in Murders per 100,000 Population, New York City vs. United States (1960 to 2018).



*Notes:* Panel A plots the total number of murder victims in NYC from 2007 to 2018. Panel B plots the number of shooting victims. In both graphs, there are vertical lines corresponding to 2011, the year that a federal court failed to dismiss the *Floyd* case in a preliminary hearing and 2013, the year the *Floyd* case was decided. Data were obtained from the New York Police Department's Annual Crime and Enforcement Reports, accessed using the following URL: <https://www1.nyc.gov/site/nypd/stats/reportsanalysis/crime-enf.page>.

**Figure 2.** Trends in Gun Violence, New York City (2007 to 2018).

present day. Indeed, NYC's homicide rate fell by nearly 50 percent during the 2010 to 2018 period, while national homicide rates were flat. A visual schematic of NYC's second great crime decline is provided in Figure 2, which plots the number of murder victims (panel A) and shooting victims (panel B) in New York City during the 2007 to 2018 period. While the number of shootings and homicides was fairly constant between 2007 and 2011, both figures declined precipitously after 2011; by 2018,



the city's number of homicide and shooting victims had declined by 45 percent and 53 percent, respectively.<sup>12</sup>

The second great crime decline in New York City, to date, is mostly undocumented in the academic literature and remains largely unexplained, though gentrification has been suggested as a contributing factor (Barton, 2016).<sup>13</sup> That said, the rapidity of the decline in gun violence over a very short time period suggests that demographic changes are unlikely to explain the near 50 percent decline in gun violence that is concentrated in these years. Likewise, there were no changes in police manpower during this period (see Figure A3 in the Appendix) nor were cohorts born 18 years earlier exposed to an abrupt change in abortion policy or exposure to lead paint.

### The Rise and Fall of Mass Enforcement in New York City

During the period from 2002 to 2011, the number of official street stops made by NYPD officers increased by nearly an order of magnitude from 97,000 to 680,000. This dramatic increase in street-level enforcement by the NYPD was policy-driven and coincided with the administration of Police Commissioner Raymond Kelly as well as with the department's signature proactive policing program, *Operation Impact*, a broad-based initiative that directed additional police personnel to 70 "impact zones" throughout the city and encouraged especially intensive enforcement in these areas (Bratton & Anderson, 2018; MacDonald, Fagan, & Geller, 2016).

The dramatic increase in enforcement activity eventually led to federal civil rights litigation, in the form of a class action lawsuit, initially filed in 2008. This litigation, *Floyd v. City of New York*, was named after David Floyd, an African-American NYC resident who was stopped and searched by police officers who claimed that they suspected him of committing a burglary.<sup>14</sup> Floyd, along with several co-plaintiffs, filed a civil action against the City of New York alleging that the defendants designed and implemented a policy of unconstitutional stops and frisks by the NYPD on the basis of race.<sup>15</sup> On August 31, 2011, the United States District Court for the Southern District of New York denied the city's motion for summary judgment of the case.<sup>16</sup> In August 2013, two years after failing to dismiss the case, Judge Shira A. Scheindlin ruled, after a bench trial, that the NYPD's policy and practice of mass enforcement through field interrogations had violated the Fourth Amendment by conducting unreasonable searches and the Fourteenth Amendment by systematically conducting stops and frisks in a racially discriminatory manner. We plot the number of

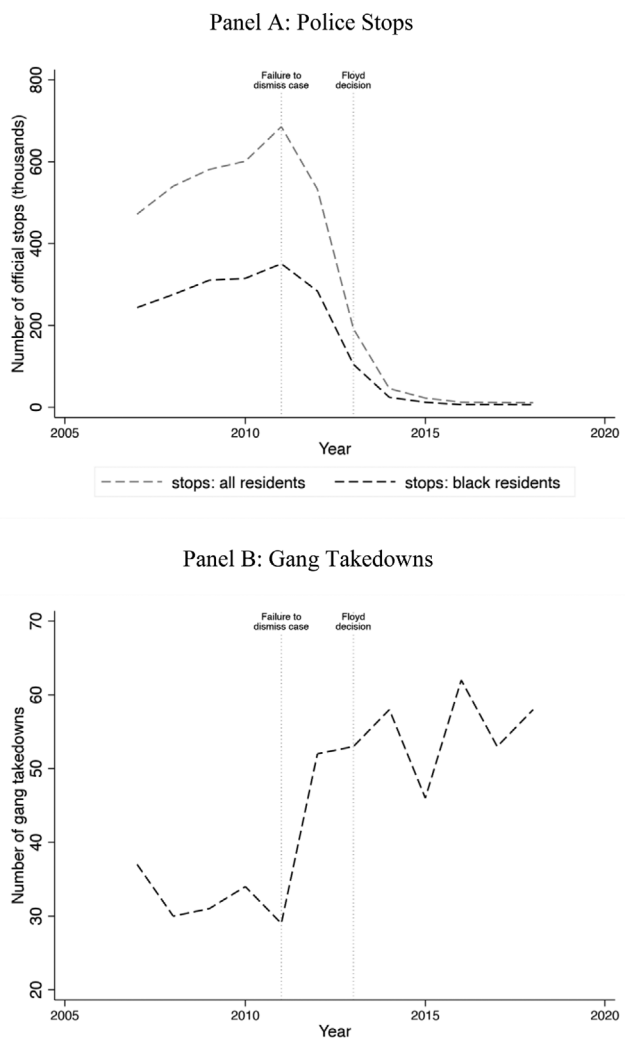
<sup>12</sup> It is likewise instructive to compare NYC to other large cities. In Appendix Figure A1, we plot log murders per 100,000 population for NYC against the 32 other U.S. cities with populations exceeding 500,000 during the 2007 to 2018 period. NYC's exceptionalism is evident in the figure—during the post-2011 period, while NYC experienced a large decline in its murder rate, murders were increasing in other large U.S. cities. We further note that NYC's exceptionalism is largely confined to homicide—for other index crimes, NYC closely tracks trends in other large cities (see Figure A2). For rape, the increase observed in NYC in 2013 is an artifact of the change in the FBI's definition of rape for which NYC was an early adopter. All appendices are available at the end of this article as it appears in JPAM online. Go to the publisher's website and use the search engine to locate the article at <http://onlinelibrary.wiley.com>.

<sup>13</sup> There is support for the idea that gentrification can lead to important crime declines in the extant literature (Autor, Palmer, & Pathak, 2014; MacDonald & Stokes, 2020; Papachristos et al., 2011).

<sup>14</sup> Case citation: 959 F. Supp. 2d 540 (2013).

<sup>15</sup> Another notable lawsuit was filed in *Ligon v. City of New York*. This lawsuit challenged the constitutionality of Operation "Clean Halls" in which NYPD officers would direct routine patrols in the hallways of private buildings.

<sup>16</sup> The Honorable Shira A. Scheindlin, writing for the court, noted that, "there is a triable issue of fact as to whether the NYPD leadership has been deliberately indifferent to the need to train, monitor, supervise, and discipline its officers adequately in order to prevent a widespread pattern of suspicionless and race-based stops."



*Notes:* Panel A plots the total number of documented street stops by NYPD officers (gray line) and stops of black residents (black line) from 2007 to 2018. Panel B plots the number of gang takedowns as proxied by two or more conspiracy arrests in a given New York City Housing Authority (NYCHA) development-week. In both graphs, there are vertical lines corresponding to 2011, the year that a federal court failed to dismiss the *Floyd* case in a preliminary hearing and 2013, the year the *Floyd* case was decided.

**Figure 3.** Trends in Police Enforcement, New York City (2007 to 2018).

documented street stops in NYC during the 2007 to 2018 period in panel A of Figure 3. As the *Floyd* case made its way through the court system, the number of street stops in NYC continued to increase, from 540,000 in 2008 to 685,000 in 2011. However, the number of street stops declined dramatically after Judge Scheindlin's 2011 ruling, which allowed the *Floyd* litigation to move forward, falling particularly quickly between 2012 and 2013 when the number of stops declined from 532,000 to 192,000. After the August 2013 federal court ruling in which NYPD's policy and practice was found to be unconstitutional, street stops declined by more than an order of magnitude from 192,000 in 2013 to 12,000 three years later. While it has been

suggested that some of the decline in the official numbers is due to a decrease in the practice of documenting street stops among NYPD officers, the decline in stop activity is so large that even if only 20 percent of stops in the post-*Floyd* period are documented, there still would have been an order of magnitude decline in the number of street stops by NYPD officers during the 2011 to 2016 period. The post-2011 period constitutes a sea change in policing in NYC and has been documented extensively in popular media reports from *The New York Times*,<sup>17</sup> *The Wall Street Journal*<sup>18</sup> and *The Washington Post*,<sup>19</sup> among other outlets.

The *Floyd* ruling was roundly criticized by Police Commissioner Raymond Kelly and then Mayor Michael Bloomberg who referred to the decision as “dangerous.”<sup>20</sup> Yet fears that the decision would have a negative impact on public safety were never realized. Instead, as noted in a prominent op-ed in *The National Review* entitled, “We Were Wrong About Stop-and-Frisk,” the city experienced a dramatic *decline* in gun violence, even as police officers were deprived of what was thought to be a key deterrent in their arsenal—the street stop (Smith, 2018; Sullivan & O’Keeffe, 2017). A remaining question is how this came to be. While offering a complete explanation for NYC’s decline in gun violence is beyond the scope of this paper, we note that as the NYPD began to wind down its policy of mass street stops, it began to invest further in another qualitatively different type of enforcement action—the “gang takedown.”

### Precision Policing in the Post-Floyd Era

In 2012, the NYPD initiated two transformational policies that signaled a major change in how it dealt with issues of gang and youth violence. First, the department implemented *Operation Crew Cut*, a policy that doubled the number of officers in the department’s gang unit from 150 to 300 in order to provide additional resources to promote the department’s heightened focus on criminal gangs. Second, Commissioner Raymond Kelly announced the renewal of the department’s “Criminal Group Database,” a unified list of alleged gang members throughout the city. As noted by Howell (2015) and Trujillo and Vitale (2019) among others, Kelly made it clear that this new operation was intended to target not only established criminal enterprises (e.g., national gangs such as the Bloods or the Crips) but also crews—“loosely affiliated groups of teens” who often “identify themselves by the blocks where they live and are responsible for much of the violence in public housing.”<sup>21</sup> By March 2018, more than 17,000 New Yorkers had been added to the NYPD’s gang database.<sup>22</sup>

The explicit goal of the NYPD’s shift in strategy was to address gang and crew violence by building large-scale conspiracy cases implicating not only individuals who may have perpetrated an underlying crime but also a host of alleged criminal associates who are suspected to have been involved with related criminal activity (Trujillo & Vitale, 2019).<sup>23</sup> Thus, while *Operation Crew Cut* and the re-creation of the

<sup>17</sup> See <https://www.nytimes.com/2017/05/30/nyregion/nypd-stop-and-frisk.html>.

<sup>18</sup> See <https://www.wsj.com/articles/in-new-york-city-police-stops-and-crime-are-both-down-1449875165>.

<sup>19</sup> See <https://www.washingtonpost.com/news/wonk/wp/2014/08/21/12-years-of-data-from-new-york-city-suggest-stop-and-frisk-wasnt-that-effective/>.

<sup>20</sup> See <https://www.wsj.com/articles/mayor-calls-stopandfrisk-ruling-dangerous-1376357978>.

<sup>21</sup> As noted by Howell (2015), the narrative that crews of young people are responsible for a large percentage of shootings in New York City was first advanced by Police Commissioner Raymond Kelly in October of 2012, when he announced *Operation Crew Cut*.

<sup>22</sup> Of those added, over 98 percent were identified as either Black or Hispanic (Trujillo & Vitale, 2019) and 8 percent were below the age of 18 (Shea, 2018).

<sup>23</sup> In order to build conspiracy cases, investigators have exploited a new tool in gang enforcement: the social media postings of suspected gang members. Leveraging digital connections to build criminal conspiracy cases against whole groups, NYPD investigators along with their partners in the City’s five district

department's gang database are the vehicles through which the department shifted from a policy of mass enforcement to precision policing, "gang takedowns" were, in practice, the fuel that powered the department's shift in policy.<sup>24</sup> "Gang takedown" is, of course, not a technical or legal term—instead this is a colloquial expression used in media reports and among members of the law enforcement establishment to describe highly-coordinated and targeted raids on alleged gang members, often centered around the city's public housing communities. The two largest gang takedowns (taking place June 4, 2014, in Manhattan and April 27, 2016, in the Bronx) led to arrests of 103 and 120 individuals, respectively. However, hundreds of smaller takedowns have also occurred over the last decade. While there is no publicly available description for how gangs were selected for a takedown, public commentary by a number of NYPD officials indicates that gangs are targeted on the basis of their perceived participation in violence (Shea, 2018).<sup>25</sup>

The NYPD's focus on gang takedowns coincides temporally with federal litigation related to the department's stop, question, and frisk practices. In Figure 3, panel B, we plot the number of gang takedowns in New York City during the 2007 to 2018 period, as proxied by clusters of two or more conspiracy arrests in the same location and on the same day.<sup>26</sup> Relative to the 2007 to 2010 period, the number of gang takedowns expanded rapidly after 2011 just as the department was engaging in dramatic reductions in the number of street stops made by NYPD officers (Figure 3, panel A). While there is no way to establish conclusively that Operation Crew Cut and the re-creation of the department's gang database were intended as a substitute for mass enforcement policies that were the subject of federal litigation, this narrative has gained considerable traction among NYC-based advocates and legal scholars with some referring to the dual policies as "Stop and Frisk 2.0" (Speri, 2018). An explicit link between the policies has likewise been articulated in numerous media reports, beginning with a 2013 article in *The New York Times* entitled "Frisking Tactic Yields to a Focus on Youth Gangs" (Goldstein & Goodman, 2013).

## DATA

To evaluate the effects of gang takedowns, we use administrative records on crime, arrests, and street stops, which are available from NYC's Open Data website.<sup>27</sup> These records provide incident-level data on each crime and arrest that occurred in NYC during the sample period, including the date, time, precise location, and top criminal charge pertaining to the incident. Following Chalfin et al. (2021), we geocode each incident to public housing communities by drawing a 500-foot (two-block) buffer around the shapefile of each of the city's housing developments.

attorney's offices, built wide-ranging criminal cases that might have otherwise taken years of painstaking undercover work to prepare. Facebook, officers like to say now, is the most reliable informer (Goldstein & Goodman, 2013).

<sup>24</sup> There have been other department-wide operational shifts as well. In particular, in 2016, the NYPD's detective bureau absorbed many of the NYPD's alternative investigative units, a move that was intended to reduce the siloing of information. Our identification strategy nets out the effect of department-wide changes in gang enforcement by focusing on variation in the precise timing of gang takedowns.

<sup>25</sup> As discussed later when we present the main results, we find no evidence of strategic timing of takedowns in response to crime trends. This is likely because (1) many communities had levels of violence that met the criteria for takedowns at the start of the policy regime and (2) many months elapse between when a location is selected for a takedown and the takedown itself.

<sup>26</sup> See Figure A4 for a plot using quarterly data. All appendices are available at the end of this article as it appears in JPAM online. Go to the publisher's website and use the search engine to locate the article at <http://onlinelibrary.wiley.com>.

<sup>27</sup> The URL is <https://opendata.cityofnewyork.us/>. We use the NYPD Arrest Data (Historic), NYPD Arrest Data (Year to Date), NYPD Complaint Data (Historic), NYPD Complaint Data (Year to Date), and The Stop, Question and Frisk data sets.

**Table 1.** Gang takedowns by borough and nexus to public housing.

| Borough       | 2010 Population | All takedowns | Public housing takedowns |
|---------------|-----------------|---------------|--------------------------|
| Bronx         | 1,385,108 (17%) | 153 (34%)     | 33 (30%)                 |
| Brooklyn      | 2,504,700 (31%) | 102 (22%)     | 30 (28%)                 |
| Manhattan     | 1,585,873 (19%) | 145 (32%)     | 41 (38%)                 |
| Queens        | 2,203,722 (27%) | 43 (9%)       | 4 (4%)                   |
| Staten Island | 468,730 (6%)    | 12 (3%)       | 1 (1%)                   |

*Notes:* Arrest data were obtained from NYC's Open Data site. Takedowns refer to incidents in which at least two conspiracy arrests were made in the same location.

## Gang Takedowns

We identify gang takedowns in the data using clusters of arrests for the crime of “conspiracy,” which are uncommon in the data and strongly associated with gang takedowns.<sup>28</sup> In our main models, we focus on clusters of two or more conspiracy arrests that occur within a 500 square foot area of a given public housing development in a given week. We focus on a one-week period as gang takedown arrests are often made over a period of days (usually weekdays), as it is not always possible to immediately locate and apprehend the named individuals in a single day. Using administrative data on geo-located arrests, we identify 109 probable gang takedowns that occurred within 500 feet of one of the city's 340 public housing developments since 2011. When we instead identify gang takedowns as clusters of two or more conspiracy arrests that occur within a given NYC borough in a given week, we identify 455 probable gang takedowns city-wide since 2011. These data are summarized in Table 1, which provides a sense for the overall scale of the takedowns as well as their geographic dispersion. Takedowns have occurred in all five boroughs of NYC though the Bronx and Manhattan, which comprise 36 percent of the city's population, account for 66 percent of the city's takedowns. Four of the city's 77 police precincts (the 5th, 42nd, 44th, and 84th), which comprise roughly 6 percent of the city's population, account for 48 percent of the gang takedowns city-wide.

City-wide, gang takedowns were associated with 3,009 conspiracy arrest charges, nearly 30 percent of which occurred in and around the city's public housing developments. Table 2 provides a description of the demographic composition of those arrested under conspiracy charges. The statistics in the table correspond closely with anecdotal descriptions found in popular media that suggest that the arrestees are young minority men. Among those arrested, approximately half are below the age of 25 and 6 percent are below the age of 18. Among takedowns in and around public housing communities, these figures are 52 percent and 8 percent, respectively. More than 90 percent of the arrestees are male, and the arrestees are largely residents of color. Non-Hispanic Blacks, who comprised approximately 25 percent of the city's 2011 population, comprise 54 percent of the arrestees. In public housing communities, they represent 63 percent of takedown arrestees. Hispanics (of any race), who were approximately 28 percent of the city's 2011 population, comprise 38 percent of the arrestees.<sup>29</sup> Non-Hispanic Whites, who made up nearly 44 percent of the city's population, comprise 6 percent of takedown arrestees.

<sup>28</sup> While the NYPD uses a “hierarchy rule” in assigning incidents to top-coded charges, we note that our focus on clusters of conspiracy charges is intended to identify the signature of a gang takedown rather than to reliably count the number of arrests that occur during takedowns.

<sup>29</sup> NYPD arrest data identify arrestees as either “White Hispanic” (25 percent) or “Black Hispanic” (13 percent). We have aggregated these two categories to conform with a global Hispanic category.



**Table 2.** Demographic composition of conspiracy arrestees.

| Variable      | All         | Non-Public housing | Public housing |
|---------------|-------------|--------------------|----------------|
| Age =         |             |                    |                |
| < 18          | 191 (6%)    | 125 (6%)           | 66 (8%)        |
| 18-24         | 1,254 (42%) | 892 (41%)          | 362 (44%)      |
| 25-44         | 1,269 (42%) | 948 (43%)          | 321 (39%)      |
| 45-64         | 277 (9%)    | 214 (7%)           | 63 (8%)        |
| > 64          | 18 (1%)     | 15 (< 1%)          | 3 (< 1%)       |
| Gender = Male | 2,733 (91%) | 1,994 (91%)        | 739 (91%)      |
| Female        | 276 (9%)    | 200 (9%)           | 76 (9%)        |
| Race = White  | 175 (6%)    | 131 (6%)           | 44 (5%)        |
| Black         | 1,611 (54%) | 1,097 (50%)        | 514 (63%)      |
| Hispanic      | 1,143 (38%) | 892 (41%)          | 251 (31%)      |
| Other/Unknown | 80 (3%)     | 74 (3%)            | 6 (1%)         |

*Note:* Arrest data were obtained from NYC's Open Data site.

### Analytic Data Set

Given the strong nexus between the gang takedowns and the city's public housing communities, we generate an analytic data set by collapsing the data to the housing development-by-week level for the 468 weeks that occur between January 2011 and December 2019, noting whether a given week occurs before, during, or after a gang takedown.<sup>30</sup> In all subsequent analyses, we focus on the subset of 73 New York City Housing Authority (NYCHA) developments that experienced at least one gang takedown and exclude from our analytic data set the developments that do not experience a gang takedown during the study period.<sup>31</sup>

Some of these 73 housing developments experienced more than a single takedown during the study period. Our primary analysis defines the post-intervention period as the period after the development's initial gang takedown. To ensure that results are not being driven by gang enforcement that occurs after the initial takedown, we perform an auxiliary analysis in which we limit our analysis to developments that experienced only a single takedown. We also estimate results for all takedowns in the data; results are substantively similar. In order to measure the effect of the initial gang takedown on community crime, in our main analysis, we focus on a two-year bandwidth around the takedown. Robustness to bandwidth selection is addressed below in the Results section.

To confirm that these clusters of conspiracy arrests pertain to gang takedowns, we performed a directed media search, identifying whether any news articles reference a gang takedown on the date and location of the conspiracy arrests. We were able to find news articles on 53 of the 73 gang takedowns that are the primary subject of this research. In a robustness check, we reestimate our models focusing on the subset of the data that we can validate in this way in addition to a battery of additional robustness checks. Beyond this, we note that to the extent that there are remaining

<sup>30</sup> We do not include pre-2011 data for takedowns occurring before 2011 due to the abrupt shift in the policy regime with respect to street stops. However, estimates remain extremely similar when pre-2011 data are used.

<sup>31</sup> We do so because the never treated developments and the developments that receive a takedown experience differential crime trends. We explore this feature of the data in greater detail in Figure A5. All appendices are available at the end of this article as it appears in JPAM online. Go to the publisher's website and use the search engine to locate the article at <http://onlinelibrary.wiley.com>.



**Table 3.** Summary statistics.

|                              | Before Initial Takedown |       |      |      | After Initial Takedown |        |      |      |
|------------------------------|-------------------------|-------|------|------|------------------------|--------|------|------|
|                              | Mean                    | S.D.  | Min. | Max. | Mean                   | S.D.   | Min. | Max. |
| Homicides                    | 0.010                   | 0.109 | 0    | 3    | 0.008                  | 0.088  | 0    | 2    |
| Shootings                    | 0.045                   | 0.214 | 0    | 3    | 0.038                  | 0.196  | 0    | 3    |
| Assaults                     | 0.510                   | 0.825 | 0    | 6    | 0.527                  | 0.83   | 0    | 8    |
| Robberies                    | 0.388                   | 0.662 | 0    | 5    | 0.355                  | 0.648  | 0    | 7    |
| Property crimes              | 1.822                   | 1.925 | 0    | 23   | 1.996                  | 2.155  | 0    | 23   |
| Total arrests                | 10.285                  | 9.522 | 0    | 69   | 9.898                  | 9.843  | 0    | 91   |
| Drug sale arrests            | 0.603                   | 1.203 | 0    | 15   | 0.513                  | 1.081  | 0    | 13   |
| Drug possession arrests      | 1.148                   | 1.708 | 0    | 27   | 0.761                  | 1.325  | 0    | 16   |
| Marijuana possession arrests | 1.067                   | 1.653 | 0    | 27   | 0.684                  | 1.251  | 0    | 16   |
| Street stops                 | 10.402                  | 16.91 | 0    | 219  | 4.307                  | 10.318 | 0    | 136  |

*Notes:* Table reports the mean and standard deviation as well as the minimum and maximum values of 10 outcome variables. The top panel reports summary statistics for our crime variables; the bottom panel reports summary statistics for our measures of police proactivity. For each variable, we report separate summary statistics for the pre- and post-intervention time periods.

errors in our gang takedown measure, so long as those errors are uncorrelated with crime, our estimates will simply be attenuated towards zero and, as such, will be conservative (Hyslop & Imbens, 2001).<sup>32</sup>

Summary statistics for our administrative data are reported in Table 3, which reports the mean and standard deviation as well as the minimum and maximum values for our five outcome variables as well as for measures of police enforcement that we use to test mechanisms. Statistics are presented separately for the pre- and post-initial takedown periods. Overall, there are approximately 0.01 homicides, 0.04 shootings, and 0.5 assaults per week in and around each of the public housing developments in our sample. Weekly homicides and shootings declined by 12 percent and 16 percent from the pre-takedown to the post-takedown periods. With respect to enforcement, there is evidence of sizable declines in the number of arrests for misdemeanor marijuana possession as well as the number of street stops. While this could, in part, be a response to the gang takedowns it is also consistent with the large secular decline in mass enforcement in NYC during this time period. In subsequent regression estimates, we net out secular variation using time fixed effects.

## ECONOMETRIC MODELS

We study the effect of gang takedowns using a differences-in-differences strategy augmented with an event study that we use to control for pre-intervention crime trends and to better understand the temporal dynamics of the effect of gang takedowns on public safety. Our primary analysis employs a differences-in-differences estimator that evaluates whether average weekly crimes changed after a gang takedown, net of NYCHA development fixed effects that account for time-invariant

<sup>32</sup> To the extent that our definition of a takedown omits small gang takedowns with either zero conspiracy charges or a single top-coded conspiracy charge, our results will be biased towards zero and will be conservative. During the directed media search, we found two presumed takedown events that appear to be associated with fraud charges rather than being gang-related; our results are robust to omitting these events.

heterogeneity among housing developments, and time fixed effects that account for city-wide time trends that could be driven by other factors, such as additional changes in policing or economic or social factors like gentrification. We focus on the 73 out of 340 public housing developments that experienced at least one gang takedown during the sample period. As such, all developments in our data experience the treatment, only at different times. Our estimator is therefore a “two-group timing only” estimator in the language of the differences-in-differences de-composition of Goodman-Bacon (2018). By focusing on this subgroup, we enhance the comparability of the developments in our data and simplify the substantive interpretation of our differences-in-differences estimates. As noted in the previous section, we focus on each development’s initial gang takedown and restrict the sample to the two years before and after each initial takedown, though, as we demonstrate in the following section, results are robust to relaxing this constraint.

In order to estimate treatment effects, we use a standard two-way fixed effects design. In particular, we estimate a Poisson regression model in which the count of crime,  $Y_i \sim \text{Poisson}(\gamma_i)$ , is regressed on a binary indicator for whether a time period occurs after a development’s initial gang takedown, conditional on development and time fixed effects:

$$\log(\gamma_{it}) = \alpha + \varphi \text{TAKEDOWN}_{it} + \beta \text{POST}_{it} + \lambda_i + \delta_t. \quad (1)$$

In equation (1),  $\text{TAKEDOWN}_{it}$  is an indicator for whether a takedown occurred in housing development  $i$  in week  $t$  and  $\text{POST}_{it}$  is an indicator for whether a given week occurs after housing development  $i$ ’s initial gang takedown.<sup>33</sup>  $\beta$  is the treatment effect of interest and  $e^\beta$  is the incidence rate ratio (IRR). The model also conditions on  $\lambda_i$ , which represents housing development fixed effects and  $\delta_t$ , which represents week-year fixed effects (a dummy variable for each unique time period in the data set). In all models, standard errors are clustered at the housing development level to account for both heteroskedasticity and arbitrary serial correlation in the error terms for observations in the same geographic unit measured at different time periods (Bertrand, Duflo, & Mullainathan, 2004).

In auxiliary models, we change how we control for time trends in order to demonstrate that estimates are not dependent on the choice of a standard two-way fixed effects model. First, we augment equation (1) with a vector of development-specific linear time trends that allow each development to have a different slope in the model. Next, instead of using week-year fixed effects, we parameterize the model to control flexibly for time using month fixed effects and a cubic time trend. Finally, we replace the week-year fixed effects with interacted borough-week-year fixed effects that account for differential crime trends in each of New York City’s five boroughs.

In order to more formally trace the temporal dynamics of crime in relation to the initial gang takedown, we estimate an event study. In this model, the count of crime,  $Y_{it} \sim \text{Poisson}(\gamma_{it})$ , is regressed on a vector of time period dummies that capture the time-path of the treatment effect, conditional on the same fixed effects in equation (1).

$$\log(\gamma_{it}) = \alpha + \left[ \sum_k \beta_k \text{POST}_{it}^k \right] + \lambda_i + \delta_t. \quad (2)$$

<sup>33</sup> We regress out the week of the takedown itself because this week receives a great deal of law enforcement attention and including it potentially compromises our ability to learn about the enduring effect of the takedowns after the arrests have been made. In practice, results do not change when this week is included as a post-takedown week.

**Table 4.** Main estimates.

|                           | (1)                           | (2)                          | (3)                           | (4)                           |
|---------------------------|-------------------------------|------------------------------|-------------------------------|-------------------------------|
| Homicides                 | −0.794*<br>(0.419)<br>[−55%]  | −0.842*<br>(0.457)<br>[−57%] | −0.936**<br>(0.468)<br>[−61%] | −0.687*<br>(0.361)<br>[−50%]  |
| Shootings                 | −0.394**<br>(0.178)<br>[−33%] | −0.350*<br>(0.202)<br>[−30%] | −0.439**<br>(0.171)<br>[−36%] | −0.366**<br>(0.166)<br>[−31%] |
| Assaults                  | −0.078<br>(0.049)<br>[−8%]    | −0.066<br>(0.048)<br>[−6%]   | −0.099**<br>(0.050)<br>[−9%]  | −0.068<br>(0.052)<br>[−7%]    |
| Robberies                 | −0.009<br>(0.067)<br>[−1%]    | 0.004<br>(0.066)<br>[0%]     | −0.052<br>(0.068)<br>[7%]     | −0.001<br>(0.056)<br>[6%]     |
| Property Crimes           | 0.034<br>(0.036)<br>[3%]      | 0.052<br>(0.039)<br>[5%]     | 0.026<br>(0.034)<br>[3%]      | 0.041<br>(0.038)<br>[4%]      |
| NYCHA effects             | X                             | X                            | X                             | X                             |
| Week-year effects         | X                             | X                            | X                             |                               |
| NYCHA linear trend        |                               | X                            |                               |                               |
| Borough-week-year effects |                               |                              | X                             |                               |
| Cubic time trend          |                               |                              |                               | X                             |

*Notes:* Estimates are from Poisson regressions of the weekly count of crime on an indicator variable for a gang takedown as well as an indicator for the post-gang takedown period. Models are run using a bandwidth of up to two years around each takedown. All models condition on NYCHA development fixed effects but each model accounts differently for time trends. Model 1 conditions on week-year fixed effects and Model 2 adds a NYCHA development-specific linear time trend. Model 3 replaces the week-year fixed effects with interacted borough-week-year fixed effects. Model 4 instead conditions on a cubic time trend. In all models, standard errors are clustered at the NYCHA development level to account for arbitrary serial correlation in the regressors. In each cell, the first row is the raw coefficient. Below this we present the clustered standard error (in parentheses) and the percentage change obtained by subtracting 1 from the estimated IRR and multiplying by 100 (in square brackets). Significance: \*  $p < 0.1$ ; \*\*  $p < 0.05$ ; \*\*\*  $p < 0.01$ .

In equation (2),  $POST_{it}^k$  is an indicator for whether housing development  $i$  is treated at time  $t$  and  $k$  indexes one of several subsets of time periods. In practice, we estimate this using six-month time periods to smooth out noise in the data. The  $\beta_k$  parameters measure the impact of gang takedowns both before and after they are executed. As we include a constant and set the coefficient  $\beta_0$  equal to zero, all estimated coefficients are relative to the period immediately prior to the initial gang takedown. These  $\beta_k$  terms serve two purposes. First, the  $\beta_k$  terms in the pre-intervention period allow us to test for parallel trends in the pre-intervention period, the key assumption of the differences-in-differences methodology. Second, the  $\beta_k$  terms in the post-intervention period allow us to characterize the extent to which the effects of the gang takedowns persist over time.

## RESULTS

### Main Results

We begin our discussion of the results by presenting differences-in-differences estimates derived from equation (1). These estimates are presented in Table 4. In the table, we present coefficients and clustered standard errors (in parentheses) along with the IRR minus 1 (in square brackets) for four violent crime categories—homicides,

shootings, assaults, and robberies—as well as aggregated property crimes. The table presents estimates for four models. Model 1 is the standard two-way differences-in-differences estimator that conditions on NYCHA development and week-year fixed effects. Model 2 adds a NYCHA development-specific linear time trend, and Model 3 allows the week-year fixed effects to vary by borough. Model 4 drops the week-year fixed effects and instead models time using month dummies and a cubic time trend.

We begin with homicides. Since homicides are rare in the data, the estimates are somewhat imprecise. Nevertheless, across the four models there is evidence that homicides decline appreciably—by between 50 and 61 percent—in the aftermath of a gang takedown. While only the estimate in Model 3 is significant at conventional levels, the other three estimates are all significant at  $p < 0.1$ . Next, we turn to shootings, which are more common in the data than homicides. In the two-year period after a takedown, shootings decline by between 30 and 36 percent. Results for Models 1, 2, and 4 are significant at conventional levels; the estimate for Model 3, which conditions on borough-week-year time trends, is less precise but is consistent with the other results. While the data we use represent shootings known to law enforcement that might be measured with systematic error if gang takedowns change patterns of crime reporting (Shepherd & Sivarajasingam, 2005), we note that the pattern of results is very similar to that of homicides, which are presumably very well measured.<sup>34</sup> With respect to assaults, the coefficients in all four models are negative and suggest a small reduction in violence, though only one of the estimates is significant at conventional levels. Finally, there is no clear evidence that crimes with a pecuniary motive—robberies or property crimes—decline after a gang takedown.

Next, we turn to our event study that is presented graphically in Figure 4. The figure plots the estimated coefficients for shootings (panel A) and violent crimes (the aggregate of shootings, assaults, and robberies) (panel B), along with their 95 percent confidence intervals for each six-month window relative to the initial gang takedown, using the pre-intervention period as the leave-out group. We focus on six-month bins rather than a more granular time window in order to smooth out the inevitable noise in analyzing rare events. However, in order to present a more granular view of the data, we also present a Lowess smoother through the weekly pre-period data (Figure A6) and a formal event study figure using quarterly data (Figure A7).<sup>35</sup>

Two broad trends are apparent. First, there is little evidence that violence was either rising or falling prior to the execution of a development's initial gang takedown. We confirm this formally using an  $F$ -test on the joint significance of the pre-intervention terms.<sup>36</sup> Though the analysis for shootings is limited with respect to statistical power, the standard errors for overall violence are sufficiently small to rule out appreciable pre-trends.<sup>37</sup> While the lack of pre-trends might appear surprising

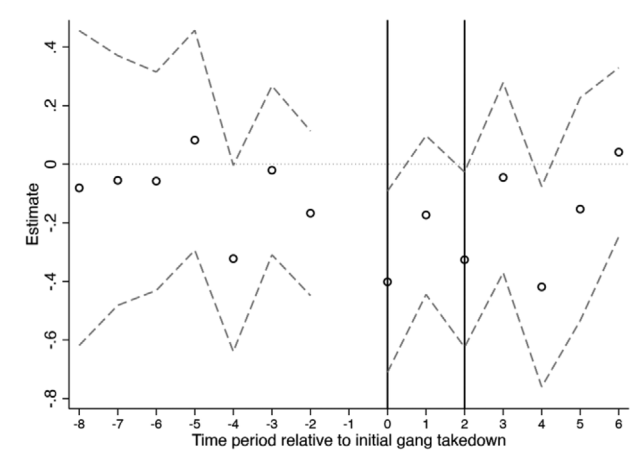
<sup>34</sup> ShotSpotter data are not publicly available in NYC.

<sup>35</sup> We also present an event study using all 340 housing developments in NYC including those that did not experience a takedown in the control group. This analysis is presented in Figure A8. Estimates are substantively similar. All appendices are available at the end of this article as it appears in JPAM online. Go to the publisher's website and use the search engine to locate the article at <http://onlinelibrary.wiley.com>.

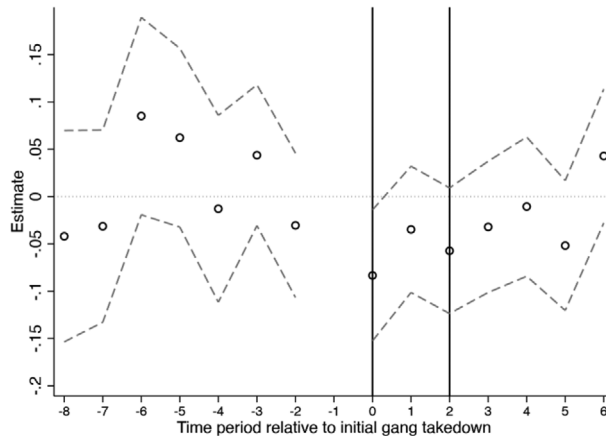
<sup>36</sup> Given that it is possible that important pre-trends might be masked by our decision to group the data into six-month bins, we also construct an  $F$ -test at the week-level and confirm that there are no significant pre-trends during the 2-, 4-, 6-, and 8-week periods prior to a takedown. In all cases,  $p$ -values are above 0.4.

<sup>37</sup> We also test whether the timing of a development's initial takedown is related to its overall level of violence by collapsing, for the pre-intervention period, weekly shootings to the housing development level and regressing weekly shootings on the takedown week. The raw data are plotted along with a quadratic best fit curve in Figure A9. For both shootings and community violence there is no clear pattern in the data. Likewise, when we drop the earliest and latest adopters from the data, estimates are unchanged.

Panel A: Shootings



Panel B: Violent Crimes



*Notes:* Figure plots coefficients from the event study regression described in equation (3) for weekly shootings (panel A) and weekly violent crimes (panel B). Each estimate represents a six-month bin, relative to a NYCHA development's initial gang takedown. For each six-month bin, the point estimate is the coefficient from a Poisson regression of the number of weekly crimes on the event study terms, conditional on week and NYCHA development fixed effects. Estimates are relative to the first time period prior to the intervention. Standard errors are clustered at the NYCHA development to account for heteroskedasticity as well as arbitrary serial correlation. The vertical line at  $t = 0$  represents the first six-month post-period. The vertical line at  $t = 2$  corresponds with the period ending 18 months after a gang takedown.

**Figure 4.** Event Study Analysis.

given that law enforcement officials have strong incentives to target the intervention to communities in which violence is rising, we offer two explanations. We begin by noting that there are many communities in which violence has been a persistent issue for a number of years. As such, the pool of communities in which intervention is potentially needed is large relative to available resources. Next, we point out that gang takedowns generally occur only after many months of investigation. As such,

even if law enforcement officials intend to target the communities in which violence is rising most rapidly, this is difficult to calibrate in practice.

Second, turning to the post-intervention trends, we estimate that shootings fell by approximately 40 percent in the six-month period directly after a gang takedown, by approximately 20 percent in the next six-month period and by approximately 38 percent in the following six-month period. While the standard errors are wider in the event study analysis than in the differences-in-differences analysis that pools across the entire post-intervention period, there is evidence of a sustained decline in gun violence for as long as 18 months after a takedown. After the initial 18-month period, estimates are less stable and do not yield clear evidence of a sustained decline in shootings. The effects are similar for overall violence. In the initial 18-month period after a gang takedown, shootings decline by approximately 10 percent. However, these reductions are not sustained over a longer time horizon.

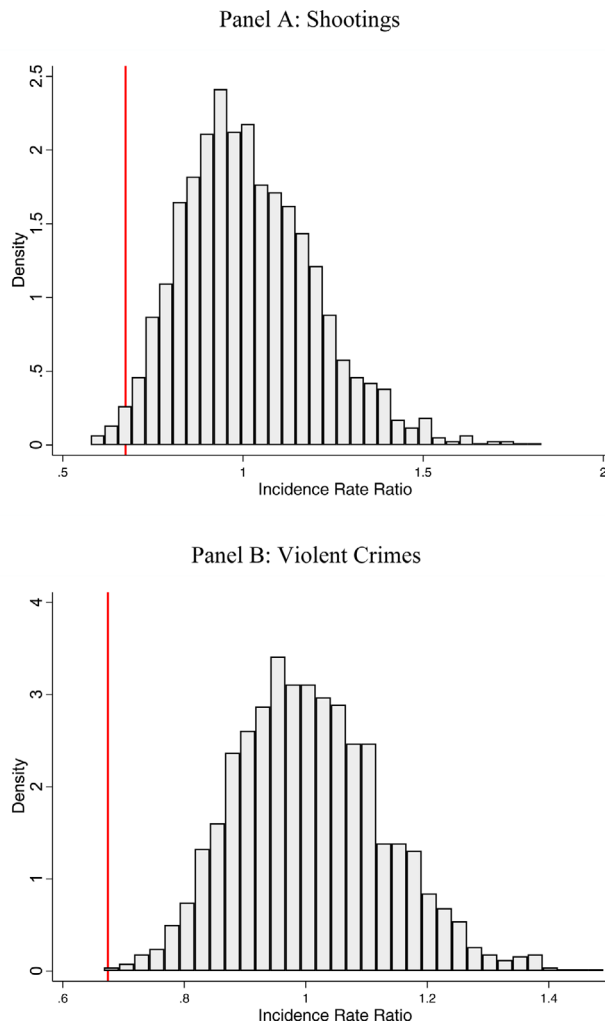
### Robustness

A review of Table 4 suggests that shootings decline significantly in the aftermath of a gang takedown. In this section, we subject this result to further scrutiny. We begin by establishing that discretionary arrest activity, in general, does not lead to a decline in gun violence by regressing weekly shootings on the first through fourth lags of arrests for marijuana possession (a proxy for proactive policing), using equation (1), which conditions on NYCHA development and week-year fixed effects. Two of the four coefficients are positive and two are negative; none of the four coefficients is significant. An *F*-test likewise fails to reject the joint significance of the lagged regressors. Next, we perform a simulation exercise in which we randomly reassign each development's gang takedown week 2,000 times and compare our actual estimate to the 2,000 placebo estimates.<sup>38</sup> This analysis is presented in Figure 5, which carries out this placebo exercise for our sample of 73 developments that experienced a gang takedown (panel A) as well as the subsample of never treated housing developments (panel B). In both cases, our actual estimate (-33 percent) is highly unusual relative to the distribution of the placebo estimates.

We also test whether the estimated treatment effect is sensitive to a variety of choices we made in analyzing the data. Figure 6 plots estimated treatment effects along with an associated 95 percent confidence interval for a series of alternative models. We begin with our preferred estimate that we reported in column (1) of Table 4. In alternate Models 2, 3, and 4, we change our definition of a gang takedown, defining it instead as weeks when three or more conspiracy arrests occurred (Model 2), weeks in which two or more conspiracy arrests occurred on a single day (Model 3), and using a subsample of takedowns that can be verified using a directed media search (Model 4). Next, we test whether the estimates are sensitive to our decision to focus on the initial gang takedown, while controlling for subsequent takedowns. In Model 5, we reestimate treatment effects focusing on the subset of developments that experienced only a single takedown during the study period. Model 6 retains data for all developments in the sample but only up until a development's second gang takedown and Model 7 estimates the effect of all gang takedowns rather than the initial takedown. Next, we test several additional sample restrictions. In Model 8, we drop housing developments that were selected to participate in the City's "Mayor's Action Plan for Community Safety," a program that saturated 15 NYCHA developments with a suite of infrastructure upgrades and enhanced social services

<sup>38</sup> This follows a recommendation in Young (2019), which shows that 2,000 repetitions should be sufficient to reliably recover correctly sized tests.



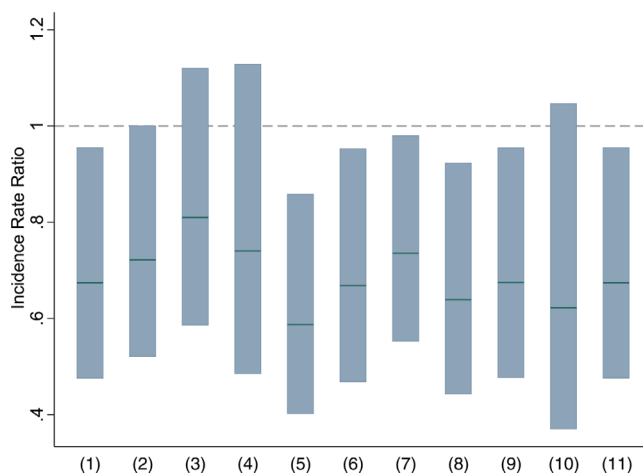


*Notes:* Figures plot the density of placebo regression estimates from a simulation exercise in which we re-randomize (2,000 times) the week of a gang takedown to each NYCHA development and run a Poisson regression of the count of weekly shootings on the placebo treatment indicator, the placebo post-treatment indicator and NYCHA development and week-year fixed effects. In panel A, we study shootings; in panel B we study all violent crimes. The actual estimate reported in column 1 of Table 4 is represented by the solid vertical red line; the histogram provides the empirical distribution of placebo treatment effects.

**Figure 5.** Actual Versus Placebo Treatment Effects (Shootings and Violent Crimes). [Color figure can be viewed at [wileyonlinelibrary.com](http://wileyonlinelibrary.com)]

during the study period.<sup>39</sup> In Model 9, we control for the timing of the NYPD's neighborhood policing program, a novel community policing program that was intended

<sup>39</sup> The MAPSTAT housing developments are: Butler, Castle Hill (I and II), Patterson, Polo Grounds, St. Nicholas, Wagner, Boulevard, Brownsville, Bushwick, Ingersol, Red Hook (East and West), Tompkins, Van Dyke (I and II), Queensbridge (I and II), and Stapleton. See <https://www1.nyc.gov/assets/operations/downloads/pdf/mmr2016/mayorsactionplanforneighborhoodsafety.pdf>.



*Notes:* Figure plots estimates from a series of Poisson regressions in which we regress the count of weekly shootings on the treatment indicator, the post-treatment indicator and NYCHA development and week-year fixed effects. We begin with our preferred estimate (Model 1), which was reported in column (1) of Table 3. Models 2, 3, and 4 employ alternative definitions of a gang takedown—Model 2 uses three conspiracy arrests to define a takedown, Model 3 defines a takedown based on two conspiracy arrests within a single day, and Model 4 uses only the subset of takedowns that can be verified via a directed media search. Models 5, 6, and 7 test robustness to our decision to focus on a development's initial gang takedown. Model 5 excludes developments that experienced more than one gang takedown during the sample period, Model 6 retains data for all developments in the sample but only up until a development's second gang takedown, and Model 7 estimates the effect of all gang takedowns rather than the initial takedown. Model 8 excludes the City's 15 MAPSTAT developments and Model 9 adds a control variable for whether a development lies within a precinct that has implemented the NYPD's signature neighborhood policing program at a given point in time. Model 10 focuses on the subset of developments for which we have weakly balanced panels—that is, two full years of pre- and post-intervention data. Model 11 uses negative binomial instead of Poisson regression. Confidence intervals are asymmetric as estimates are incidence rate ratios.

**Figure 6.** Robustness of Estimated Treatment Effects (Shootings).

[Color figure can be viewed at [wileyonlinelibrary.com](http://wileyonlinelibrary.com)]

to reduce crime.<sup>40</sup> In Model 10, we retain only balanced panels—that is, developments for which we have two full years of pre- and post-intervention data. Finally, though we prefer a Poisson model for several reasons, in Model 11, we estimate treatment effects using a negative binomial regression model.<sup>41</sup> While precision varies from model to model and decreases when we use a more stringent takedown

<sup>40</sup> See <https://www1.nyc.gov/site/nypd/bureaus/patrol/neighborhood-coordination-officers.page>.

<sup>41</sup> Sometimes crime counts are modeled using negative binomial regression models due to concerns about overdispersion in the data. For several reasons, we prefer Poisson regression in this context. First, tests for overdispersion do not distinguish between overdispersion and misspecification—see Berk and MacDonald (2008) and Blackburn (2015). Consequently, it is *a priori* unclear when overdispersion actually exists and is therefore an issue. Second, Poisson regression with robust standard errors is a more robust estimator than negative binomial regression when the distribution is not, in fact, distributed according to the negative binomial (Wooldridge, 2002). Finally, negative binomial regression yields inconsistent estimates when fixed effects are used in a model (Lancaster, 2000). This is not an issue for Poisson regression (Allison & Waterman, 2002). As our models do include fixed effects, the Poisson regression model is a more appropriate choice.

definition that reduces the number of takedowns, we see little evidence that treatment effects are sensitive to choices made in our analysis.<sup>42</sup>

### Displacement of Crimes

In studying any place-based intervention that might have an impact on public safety, a critical question is whether the intervention has reduced crime or has merely displaced it to other areas in a city (Cornish & Clarke, 1987; Eck, 1993; Guerette & Bowers, 2009; Reppetto, 1976). While both crime reduction and spatial displacement are interesting from a scientific perspective, an intervention that merely shifts crime from one location to another is far less attractive to a policymaker than one that leads to a genuine improvement in public safety. The conventional approach to studying spatial crime displacement is to examine whether an intervention leads to a rise in crime in adjacent areas.<sup>43</sup> On the other hand, if an intervention causes crime to *fall* in adjacent areas, then there is thought to be evidence of “diffusion of benefits,” which captures the idea that even untreated locations might benefit from the general perception that an intervention is in use (Clarke & Weisburd, 1994; Guerette & Bowers, 2009; Weisburd et al., 2006).

We study displacement in three ways. First, we test whether crime is changing in the region directly around a treated housing development. We test this using two catchment areas: between 500 and 750 feet from a treated public housing development and between 500 and 1,000 feet away from a treated housing development. Second, for each public housing development in our sample, we identify the three closest never-treated housing developments and test for changes in crime after a gang takedown in the closest one, two, and three developments. Finally, we consider all never-treated developments within one quarter and one half mile of a treated housing development.<sup>44</sup> Results are presented in Table 5. Consistent with research on gang injunctions (Ridgeway et al., 2019) and research that suggests that crime tends to be “coupled to place” (Weisburd, Groff, & Yang, 2014), we do not detect evidence of crime displacement using any of the three heuristics. If anything, there is evidence for a diffusion of benefits to certain nearby areas, which is not unexpected as gang takedowns, while centralized near housing developments, sometimes include arrests that take place in other nearby locations. As such, it is likely that nearby areas, including some nearby housing developments, were partially exposed to the treatment. A second possibility is that, in the aftermath of a gang takedown,

<sup>42</sup> We also demonstrate that treatment effects are robust to several additional choices. First, we show that our estimates do not depend on any one highly leveraged housing development. This is shown in Figure A10, which plots the estimated treatment effect, re-running the model dropping each housing development one at a time. Second, we show that estimates do not change dramatically when we add additional years to the data set. In Figure A11, we estimate effects excluding takedowns that occurred in a given year in order to test whether effects are not driven by a small subset of the data. The estimates remain very similar. Finally, Figure A12 shows the sensitivity of the estimates to our choice of a two-year bandwidth around the initial gang takedown. Standard errors shrink as the bandwidth increases but estimates are not sensitive to bandwidth choice. All appendices are available at the end of this article as it appears in JPAM online. Go to the publisher’s website and use the search engine to locate the article at <http://onlinelibrary.wiley.com>.

<sup>43</sup> Measuring crime displacement is challenging for a number of reasons, chief among them being that it is unclear *a priori* where crime might go upon being displaced. Will crime merely be pushed “around the corner” (Blattman et al., 2017) or will it migrate to some more distal area that shares one or more key characteristics with the treated area? Given the difficulty of exhaustively testing for all forms of displacement, the norm in the empirical literature is to focus on adjacent areas (Guerette & Bowers, 2009).

<sup>44</sup> On average, two never-treated developments are within one quarter mile and five never-treated developments are within one half mile of each treated development.

**Table 5.** Displacement of crimes.

|                   | (1)                         | (2)                         | (3)                            | (4)                           | (5)                         | (6)                         | (7)                         |
|-------------------|-----------------------------|-----------------------------|--------------------------------|-------------------------------|-----------------------------|-----------------------------|-----------------------------|
| Homicides         | −0.600<br>(0.586)<br>[−45%] | −0.551<br>(0.492)<br>[−42%] | −0.258<br>(0.277)<br>[−23%]    | −0.174<br>(0.180)<br>[−16%]   | −0.094<br>(0.157)<br>[−9%]  | −0.231<br>(0.328)<br>[−21%] | −0.170<br>(0.185)<br>[−16%] |
| Shootings         | −0.251<br>(0.354)<br>[−22%] | −0.275<br>(0.241)<br>[−24%] | −0.407***<br>(0.149)<br>[−33%] | −0.195**<br>(0.085)<br>[−18%] | −0.117<br>(0.078)<br>[−11%] | −0.083<br>(0.167)<br>[−8%]  | 0.072<br>(0.108)<br>[7%]    |
| Assaults          | 0.100<br>(0.107)<br>[11%]   | 0.011<br>(0.074)<br>[1%]    | −0.085*<br>(0.045)<br>[−8%]    | −0.066**<br>(0.030)<br>[−6%]  | −0.035<br>(0.029)<br>[−3%]  | 0.024<br>(0.052)<br>[2%]    | 0.006<br>(0.029)<br>[1%]    |
| Robberies         | 0.071<br>(0.138)<br>[7%]    | 0.057<br>(0.088)<br>[6%]    | −0.030<br>(0.059)<br>[−3%]     | −0.013<br>(0.035)<br>[−1%]    | −0.010<br>(0.035)<br>[−1%]  | −0.061<br>(0.062)<br>[−6%]  | 0.004<br>(0.036)<br>[0%]    |
| Property crimes   | 0.008<br>(0.043)<br>[1%]    | 0.004<br>(0.039)<br>[0%]    | 0.019<br>(0.045)<br>[2%]       | −0.029<br>(0.037)<br>[−3%]    | −0.014<br>(0.029)<br>[−1%]  | −0.020<br>(0.036)<br>[−2%]  | −0.003<br>(0.020)<br>[−0%]  |
| NYCHA effects     | X                           | X                           | X                              | X                             | X                           | X                           | X                           |
| Week–year effects | X                           | X                           | X                              | X                             | X                           | X                           | X                           |

*Notes:* Estimates are from Poisson regressions of the weekly count of crime in a particular off-development region on an indicator variable for a gang takedown as well as an indicator for the post-gang takedown period. Models are run using a bandwidth of up to two years around each takedown. All models condition on NYCHA development and week fixed effects. Model 1 counts weekly crimes in the area that is between 500 and 750 feet away from the treated housing development. Model 2 counts weekly crimes in the area that is between 500 and 1,000 feet away from the treated housing development. Models 3, 4, and 5 count crimes in the nearest 1, 2, and 3 untreated developments. Finally, Models 6 and 7 count crimes in all developments within one quarter mile and one half mile of the treated housing development. In all models, standard errors are clustered at the NYCHA development level to account for arbitrary serial correlation in the regressors. In each cell, the first row is the raw coefficient. Below this we present the clustered standard error (in parentheses) and the percentage change obtained by subtracting 1 from the estimated IRR and multiplying by 100 (in square brackets). Significance: \*  $p < 0.1$ ; \*\*  $p < 0.05$ ; \*\*\*  $p < 0.01$ .

there may be a reduction in retaliatory violence in communities with historical ties to the treated development. For shootings, we observe negative, albeit imprecisely estimated, coefficients when we study crime in nearby catchment areas outside of the treated area. We observe statistically significant reductions in shootings in the nearest one and two housing developments. However, when we consider all housing developments within a quarter or a half mile of the treated development, estimates are small and close to zero. Overall, the evidence is inconsistent with the idea that crime is displaced to nearby areas but suggests that certain nearby areas, albeit not all nearby areas, may have experienced some public safety benefits.

## Extensions

### *Do Gang Takedowns Lead to a Sustained Increase in Enforcement?*

Earlier, we demonstrated that gun violence declines by approximately 40 percent in the aftermath of a gang takedown and that this effect persists for as long as 18 months after the takedown. We now consider whether these reductions in crime are due to the effects of the gang takedown itself or a general increase in police presence and enforcement activity that may follow in the aftermath of a takedown. We explore this hypothesis in Table 6 by considering whether a range of indicators of police activity—including arrests and street stops—change after a gang takedown.

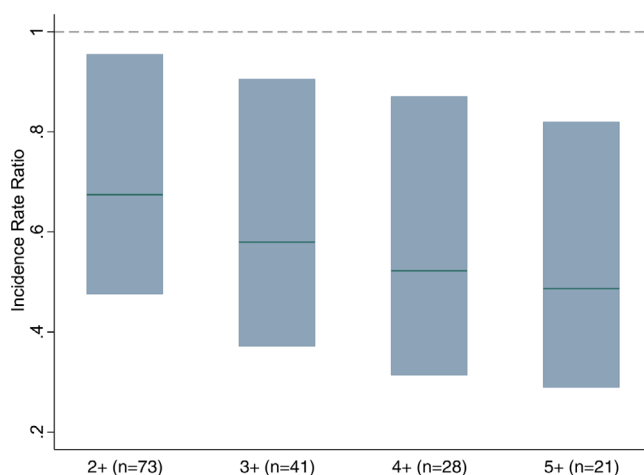
**Table 6.** Estimates: Enforcement activity.

|                           | (1)     | (2)     | (3)     | (4)     |
|---------------------------|---------|---------|---------|---------|
| Total                     | -0.006  | -0.013  | 0.006   | -0.010  |
| Arrests                   | (0.031) | (0.030) | (0.031) | (0.030) |
|                           | [1%]    | [-1%]   | [1%]    | [-1%]   |
| Drug Sale                 | -0.024  | -0.053  | -0.019  | -0.047  |
| Arrests                   | (0.084) | (0.087) | (0.079) | (0.086) |
|                           | [-2%]   | [-5%]   | [-2%]   | [-5%]   |
| Drug Possession           | -0.105* | -0.094  | -0.110* | -0.090  |
| Arrests                   | (0.056) | (0.060) | (0.061) | (0.060) |
|                           | [-10%]  | [-9%]   | [-10%]  | [-9%]   |
| Misdemeanor               | -0.119* | -0.106* | -0.114* | -0.099  |
| Marijuana Arrests         | (0.063) | (0.063) | (0.067) | (0.063) |
|                           | [-11%]  | [-10%]  | [-11%]  | [-9%]   |
| Street stops              | -0.048  | 0.038   | -0.060  | -0.081  |
|                           | (0.092) | (0.123) | (0.084) | (0.083) |
|                           | [-5%]   | [4%]    | [-6%]   | [-8%]   |
| NYCHA effects             | X       | X       | X       | X       |
| Week-year effects         | X       | X       | X       |         |
| NYCHA linear trend        |         | X       |         |         |
| Borough-week-year effects |         |         | X       |         |
| Cubic time trend          |         |         |         | X       |

*Notes:* Estimates are from Poisson regressions of the weekly count of enforcement activities on an indicator variable for a gang takedown as well as an indicator for the post-gang takedown period. Models are run using a bandwidth of up to two years around each takedown. All models condition on NYCHA development fixed effects but each model accounts differently for time trends. Model 1 conditions on week-year fixed effects and Model 2 adds a NYCHA development-specific linear time trend. Model 3 replaces the week-year fixed effects with interacted borough-week-year fixed effects. Model 4 instead conditions on a cubic time trend. In all models, standard errors are clustered at the NYCHA development level to account for arbitrary serial correlation in the regressors. In each cell, the first row is the raw coefficient. Below this we present the clustered standard error (in parentheses) and the percentage change obtained by subtracting 1 from the estimated IRR and multiplying by 100 (in square brackets). Significance: \*  $p < 0.1$ ; \*\*  $p < 0.05$ ; \*\*\*  $p < 0.01$ .

With respect to arrests, we consider total arrests as well as arrests for the sale of drugs, drug possession and, specifically, misdemeanor marijuana possession. These types of drug arrests are a reasonable proxy for police activity as such arrests are generally made as a result of officer surveillance rather than originating from a citizen 911 call. Referring to Table 6, we see little evidence that total arrests or arrests for the sale of drugs change after a gang takedown. With respect to arrests for drug possession including misdemeanor marijuana possession, if anything, there is evidence of a modest decline in such arrests after a gang takedown though the results are not significant at conventional levels. With respect to street stops, there is likewise little evidence that these are changing in the aftermath of gang takedowns. We note that these results are not an artifact of changes in policing in NYC generally as all models continue to condition on week-year (as well as NYCHA development) fixed effects. Likewise, the results are not explained by the NYPD's neighborhood policing program as effects persist when we control for the program's timing.<sup>45</sup>

<sup>45</sup> In Figure A13, focusing on misdemeanor marijuana arrests and street stops, we present results for the event study. On the whole, these figures provide little evidence that there were pre-trends in discretionary police activities. There is some evidence that, if anything, street stops were slightly higher prior to a takedown though an  $F$ -test yields a  $p$ -value that is insignificant at conventional levels. For misde-



*Notes:* Figure plots estimates from a series of Poisson regressions in which we regress the count of weekly shootings on the treatment indicator, the post-treatment indicator and NYCHA development, and week-year fixed effects. The first bar represents our preferred estimate that was reported in column (1) of Table 3 and includes all 73 developments that experienced at least one gang takedown, as defined by two or more conspiracy arrests. The remaining models use the subset of the data for which the initial gang takedown consisted of at least 3, 4, or 5 arrests. Confidence intervals are asymmetric as estimates are incidence rate ratios.

**Figure 7.** Estimated Treatment Effect by Size of Gang Takedown (Shootings).  
[Color figure can be viewed at [wileyonlinelibrary.com](http://wileyonlinelibrary.com)]

### *Treatment Effect Heterogeneity*

Next, we explore the extent to which there is heterogeneity in the effect of the take-downs. Recognizing that each NYC borough has a different district attorney's office, we begin by estimating models separately by borough for Manhattan, Brooklyn, and the Bronx, the three NYC boroughs that account for 92 percent of the takedowns. These results are presented in Figure A14. Models are underpowered to detect effects at the borough level though we note that the largest estimate is for Brooklyn and the smallest estimate is for the Bronx.

We next consider whether there is a dose-response relationship between shootings and the size of the gang takedown. We begin by showing what happened to violence—in this case, the aggregate of assaults and shootings—in and around Grant and Manhattanville Houses, two nearby Manhattan housing developments that experienced “the largest gang raid in NYC history.”<sup>46</sup> As is evident from Figure A15, there was a sizeable decline in violence in these housing developments in the aftermath of the gang takedown. To investigate this more systematically, in Figure 7 we plot estimated treatment effects for different subsets of our housing developments based on the size of the initial gang takedown. There is evidence that larger takedowns lead to larger treatment effects—for instance, when we focus on the

meanor marijuana arrests, trends are flat. All appendices are available at the end of this article as it appears in JPAM online. Go to the publisher's website and use the search engine to locate the article at <http://onlinelibrary.wiley.com>.

<sup>46</sup> See <https://www.dnainfo.com/new-york/20140605/west-harlem/harlem-gang-takedown-is-largest-cityhistory-officials-say/>. We aggregate shootings and assaults here in order to increase the density of the crime data.



$n = 21$  developments with an initial takedown that consisted of at least five conspiracy arrests, the estimated treatment effect is approximately 50 percent ( $p < 0.01$ ).

## DISCUSSION

This research leverages a natural experiment that occurred after the NYPD's rapid shift from a regime of mass enforcement centered around frequent street stops and field interrogations to a more surgical regime of precision policing in which the department concentrated its focus on a small number of suspected criminal organizations that are thought to be the driver of an outsize share of the city's gun violence. The signature policy of the new regime was a series of targeted gang enforcement actions conducted by the police in cooperation with the city's five district attorney's offices. Since 2011, there have been more than 400 of these "gang takedowns" across the city, which were centered disproportionately around the city's public housing communities.

Using data on gang takedowns in and around 73 of the city's public housing communities that experienced at least one takedown during the study period, we document evidence that gun violence declines by approximately one third in the aftermath of a takedown. Remarkably, these impacts appear to last for approximately 18 months despite the fact that there is little evidence of any sort of sustained law enforcement presence after the initial gang takedown. We do not detect evidence of crime displacement to adjacent areas or to nearby public housing communities. Prior research has investigated the substantial decline in gun violence in NYC during the last decade and has concluded that the public safety dividend of the last few years is a direct result of the federal court ruling that curtailed the NYPD's ability to engage in the intensive use of street stops and field interrogations (Sullivan & O'Keeffe, 2017). The conclusion of this research—that curtailing proactive policing can reduce major crime—is provocative but fails to account for the shift in the policy regime during this period from one of mass enforcement to one of precision policing.

How many shootings and homicides are abated by the takedowns? Our estimates suggest that the number of weekly shootings per development in the 73 housing developments in our sample declines by one third—from approximately 0.045 per week to 0.030 per week—in the one-year period after a gang takedown. Across 73 developments, this suggests that the takedowns abated slightly more than one shooting per week each year. During the 2011 to 2018 period, shootings per year in NYC declined by 50 percent from 1,509 to 754. Over this seven-year period, the cumulative decline in shootings relative to NYC's 2011 rate was 3,237. In public housing communities, shootings declined by 52 percent, from 653 to 313, a cumulative decline of 1,582 during the seven-year period. This, in turn, suggests that the gang takedowns may explain approximately 22 percent ( $352/1,582$ ) of the cumulative decline in shootings in and around public housing in NYC during the 2011 to 2018 period and perhaps 11 percent ( $352/3,237$ ) of the decline in shootings city-wide. With respect to homicide, the estimates are noisier and are only significant at the  $p < 0.1$  level. Nevertheless, taking the point estimates at face value suggests that the gang takedowns abate approximately 17 homicides per year, which suggests that the takedowns may explain at least 10 percent of the city's homicide decline after 2011.

This research adds an important data point to the growing scholarly literature on gang enforcement, which includes research on gang injunctions, truancy, curfew enforcement and "pulling levers" strategies, which include a wide variety of interventions that have been inspired by *Operation Ceasefire* and programs such as *Cure Violence*. Relative to these studies, which center on deterrence-focused strategies

that empower law enforcement to disrupt gang activity, this research is the first to consider the impact of a gang takedown strategy that focuses predominantly on incapacitation. We also present a test of the efficacy of the shift from a regime of mass enforcement to a precision policing regime at scale. We note that these findings describe the marginal impact of precision enforcement across time and space—to the extent that the regime shift has affected crime throughout the city, our estimates may, in fact, be conservative estimates of the impact of a precision policing regime more generally.

Gun violence imposes enormous costs on the most disadvantaged communities in the United States (Lee et al., 2014). Beyond the direct impacts of violence itself, which are considerable (Ludwig & Cook, 2001), the long-term effects of gun violence include impacts on children's cognition and educational outcomes (Sharkey, 2010; Sharkey et al., 2014; Sharkey, 2018) as well as health and well-being (Breslau et al., 1999; Cook & Ludwig, 2002). Sadly, this burden may compound itself generation after generation, becoming an engine for the intergenerational transmission of violence (Ehrensaft et al., 2003). The findings we report in this paper suggest that surgical policing tactics are a promising avenue through which law enforcement can abate the most socially costly types of crimes while limiting the extent to which mass enforcement widens the net of the criminal justice system for communities of color. Notably, unlike gang injunctions, which empower street-level officers to interact more extensively with suspected gang members, the gang takedowns we study do not change the mandate of the “street level bureaucrats” (Lipsky, 1971). As such, to the extent that this approach can be exported to other cities, this research suggests a potential pathway through which law enforcement agencies can address the dual plagues of under- and over-policing in poor minority communities (Leovy, 2015).

Several points of caution are worth noting. First, while the effects persist for up to 18 months after an initial gang takedown, the violence reductions we observe do not continue in perpetuity. These data thus suggest that gang takedowns offer a means of temporarily relieving the symptoms of the disease of gun violence rather than offering a cure. Second, we note that the effects do not tend to spill over appreciably to nearby locations, thus raising the prospect that deterrence effects may potentially be small relative to the incapacitation value of the intervention. While the precise mechanisms through which the gang takedowns improve public safety remain unresolved, we note that many of those arrested during the takedowns face appreciable prison sentences. For example, among the 120 individuals arrested during the infamous “Bronx 120” gang takedown on April 27, 2016, two thirds of those arrested ended up being sentenced to a prison term of at least two years (Howell, 2009).<sup>47</sup> Third, advocates and legal scholars have raised a number of due process and fairness concerns about gang takedowns and have suggested that while gang takedowns have been offered as a less invasive solution to previous stop and frisk practices, they may continue to create collateral damage for poor minority communities.

This is an especially important consideration in light of recent research by Owens, Mioduszewski, and Bates (2019), which finds that gang injunctions, a related intervention, tend to reduce home values in a community despite having an effect on crime. Finally, while our findings broadly conform to those of Ridgeway et al. (2019), who study the impact of gang injunctions, they contrast with those of Saunders, Hunt, and Hollywood (2016), who studied Chicago's use of a “strategic subjects list” as a means of targeting enforcement resources in a person-focused policing strategy. While the interventions employed in Chicago do not appear to include

<sup>47</sup> A similar story appears to hold among the 103 individuals arrested during the second-largest gang takedown on June 4, 2014, in Manhattan (Howell, 2018).

targeted gang takedowns, the contrasting evidence reminds us that even when law enforcement is able to successfully identify high-risk individuals, an effective precision policing regime requires a robust mechanism to either incapacitate or deter potential offenders.

*AARON CHALFIN is an Assistant Professor of Criminology at the University of Pennsylvania, 558 McNeil Building, 3718 Locust Walk, Philadelphia, PA 19104 (e-mail: achalfin@sas.upenn.edu).*

*MICHAEL LAFOREST is a Postdoctoral Scholar in the Criminal Justice Research Center at The Pennsylvania State University, 404 Oswald Tower, University Park, PA 16802 (e-mail: mlaforest@psu.edu).*

*JACOB KAPLAN is a Researcher at the Princeton School of Public and International Affairs, Princeton University, Robertson Hall, 20 Prospect Avenue, Princeton, NJ 08540 (e-mail: jk7785@princeton.edu).*

## ACKNOWLEDGMENTS

We are grateful to Thomas Hogan, John MacDonald, and Greg Ridgeway for helpful comments on an earlier version of this manuscript. Of course, all remaining errors are our own. Please address correspondence to: Aaron Chalfin, Department of Criminology, 558 McNeil Building, University of Pennsylvania, Philadelphia, PA 19104.

## REFERENCES

- Allison, P. D., & Waterman, R. P. (2002). Fixed-effects negative binomial regression models. *Sociological Methodology*, 32, 247–265.
- Autor, D. H., Palmer, C. J., & Pathak, P. A. (2014). Housing market spillovers: Evidence from the end of rent control in Cambridge, Massachusetts. *Journal of Political Economy*, 122, 661–717.
- Ayres, I., & Levitt, S. D. (1998). Measuring positive externalities from unobservable victim precaution: An empirical analysis of lojack. *The Quarterly Journal of Economics*, 113, 43–77.
- Balasuriya, L., Wijeratne, S., Doran, D., & Sheth, A. (2016). Finding street gang members on Twitter. In 2016 IEEE/ACM International Conference on Advances in Social Networks Analysis and Mining (ASONAM), pp. 685–692. IEEE.
- Bandes, S. A., Pryor, M., Kerrison, E. M., & Goff, P. A. (2019). The mismeasure of terry stops: Assessing the psychological and emotional harms of stop and frisk to individuals and communities. *Behavioral Sciences & the Law*, 37, 176–194.
- Barton, M. S. (2016). Gentrification and violent crime in New York City. *Crime & Delinquency*, 62, 1180–1202.
- Baumer, E. P., & Wolff, K. T. (2014). Evaluating contemporary crime drop(s) in America, New York City, and many other places. *Justice Quarterly*, 31, 5–38.
- Behrman, M. (2015). When gangs go viral: Using social media and surveillance cameras to enhance gang databases. *Harvard Journal of Law & Technology*, 29, 315.
- Berk, R., & MacDonald, J. M. (2008). Overdispersion and Poisson regression. *Journal of Quantitative Criminology*, 24, 269–284.
- Bernasco, W., & Steenbeek, W. (2017). More places than crimes: Implications for evaluating the law of crime concentration at place. *Journal of Quantitative Criminology*, 33, 451–467.
- Bertrand, M., Duflo, E., & Mullainathan, S. (2004). How much should we trust differences-in-differences estimates? *The Quarterly Journal of Economics*, 119, 249–275.

- Billings, S. B., & Schnepel, K. T. (2018). Life after lead: Effects of early interventions for children exposed to lead. *American Economic Journal: Applied Economics*, 10, 315–44.
- Blackburn, M. L. (2015). The relative performance of Poisson and negative binomial regression estimators. *Oxford Bulletin of Economics and Statistics*, 77, 605–616.
- Blattman, C., Green, D., Ortega, D., & Tobón, S. (2017). Pushing crime around the corner? Estimating experimental impacts of large-scale security interventions. Cambridge, MA: National Bureau of Economic Research.
- Blumstein, A. (1993). Making rationality relevant: The American Society of Criminology 1992 Presidential Address. *Criminology*, 31, 1–16.
- Blumstein, A., & Rosenfeld, R. (2008). Factors contributing to U.S. crime trends. In *Understanding Crime Trends*, Volume 2, pp. 13–44. National Academy Press.
- Blumstein, A., Wallman, J., & Farrington, D. (2006). *The crime drop in America*. Cambridge University Press.
- Boyle, D. J., Lanterman, J. L., Pascarella, J. E., & Cheng, C.-C. (2010). The impact of Newark's Operation Ceasefire on trauma center gunshot wound admissions. *Justice Research and Policy*, 12, 105–123.
- Braga, A. A. (2005). Hot spots policing and crime prevention: A systematic review of randomized controlled trials. *Journal of Experimental Criminology*, 1, 317–342.
- Braga, A. A., & Bond, B. J. (2008). Policing crime and disorder hot spots: A randomized controlled trial. *Criminology*, 46, 577–607.
- Braga, A. A., & Clarke, R. V. (2014). Explaining high-risk concentrations of crime in the city: Social disorganization, crime opportunities, and important next steps. *Journal of Research in Crime and Delinquency*, 51, 480–498.
- Braga, A. A., Hureau, D. M., & Papachristos, A. V. (2014). Detering gang-involved gun violence: Measuring the impact of Boston's Operation Ceasefire on street gang behavior. *Journal of Quantitative Criminology*, 30, 113–139.
- Braga, A. A., Kennedy, D. M., Waring, E. J., & Piehl, A. M. (2001). Problem-oriented policing, deterrence, and youth violence: An evaluation of Boston's Operation Ceasefire. *Journal of Research in Crime and Delinquency*, 38, 195–225.
- Braga, A. A., Papachristos, A. V., & Hureau, D. M. (2014). The effects of hot spots policing on crime: An updated systematic review and meta-analysis. *Justice Quarterly*, 31, 633–663.
- Braga, A. A., & Weisburd, D. L. (2012). The effects of “pulling levers” focused deterrence strategies on crime. *Campbell Systematic Reviews*, 8, 1–90.
- Braga, A. A., Weisburd, D. L., Waring, E. J., Mazerolle, L. G., Spelman, W., & Gajewski, F. (1999). Problem-oriented policing in violent crime places: A randomized controlled experiment. *Criminology*, 37, 541–580.
- Bratton, W., & Anderson, B. C. (2018). Precision policing. *City Journal*.
- Breslau, N., Chilcoat, H. D., Kessler, R. C., & Davis, G. C. (1999). Previous exposure to trauma and PTSD effects of subsequent trauma: Results from the Detroit area survey of trauma. *American Journal of Psychiatry*, 156, 902–907.
- Bruinius, H. (2018). Why New York crime has plunged to record lows. *The Christian Science Monitor*, January 3, 2018.
- Butler, P. (2014). Stop and frisk and torture-lite: Police terror of minority communities. *Ohio State Criminal Law Review*, 12, 57.
- Butts, J. A., Roman, C. G., Bostwick, L., & Porter, J. R. (2015a). Cure violence: A public health model to reduce gun violence. *Annual Review of Public Health*, 36, 39–53.
- Butts, J., Wolff, K. T., Misshula, E., & Delgado, S. (2015b). Effectiveness of the Cure Violence model in New York City. New York, NY: John Jay Research and Evaluation Center.
- Caetano, G., & Maheshri, V. (2018). Identifying dynamic spillovers of crime with a causal approach to model selection. *Quantitative Economics*, 9, 343–394.
- Carr, J. B., & Doleac, J. L. (2018). Keep the kids inside? Juvenile curfews and urban gun violence. *The Review of Economics and Statistics*, 100, 609–618.

- Chalfin, A., Hansen, B., Lerner, J., & Parker, L. (2021). Reducing crime through environmental design: Evidence from a randomized experiment of street lighting in New York City. *Journal of Quantitative Criminology*. Available at <https://doi.org/10.1007/s10940-020-09490-6>.
- Chalfin, A., Hansen, B., Weisburst, E., & Williams, M. (2020). Police force size and civilian race. NBER Working Paper No. 28202. Cambridge, MA: National Bureau of Economic Research.
- Chalfin, A., & McCrary, J. (2017). Criminal deterrence: A review of the literature. *Journal of Economic Literature*, 55, 5–48.
- Chalfin, A., & McCrary, J. (2018). Are U.S. cities underpoliced? Theory and evidence. *The Review of Economics and Statistics*, 100, 167–186.
- Clarke, R. V., & Weisburd, D. (1994). Diffusion of crime control benefits: Observations on the reverse of displacement. *Crime Prevention Studies*, 2, 165–184.
- Cook, P. J., Dodge, K., Farkas, G., Fryer, R. G., Guryan, J., Ludwig, J. ... Steinberg, L. (2015). Not too late: Improving academic outcomes for disadvantaged youth. Institute for Policy Research, Northwestern University, Working Paper WP-15-01. Available at <http://www.ipr.northwestern.edu/publications/papers/2015/ipr-wp-15-01.html>.
- Cook, P. J., & Ludwig, J. (2002). The costs of gun violence against children. *The Future of Children*, 12, 86–99.
- Corman, H., & Mocan, N. (2005). Carrots, sticks, and broken windows. *The Journal of Law and Economics*, 48, 235–266.
- Cornish, D. B., & Clarke, R. V. (1987). Understanding crime displacement: An application of rational choice theory. *Criminology*, 25, 933–948.
- Corsaro, N., Brunson, R. K., & McGarrell, E. F. (2013). Problem-oriented policing and open-air drug markets: Examining the Rockford pulling levers deterrence strategy. *Crime & Delinquency*, 59, 1085–1107.
- Corsaro, N., Hunt, E. D., Hipple, N. K., & McGarrell, E. F. (2012). The impact of drug market pulling levers policing on neighborhood violence: An evaluation of the High Point drug market intervention. *Criminology & Public Policy*, 11, 167–199.
- Davis, J. M., & Heller, S. B. (2020). Rethinking the benefits of youth employment programs: The heterogeneous effects of summer jobs. *The Review of Economics and Statistics*, 102, 664–677.
- Dell, M. (2015). Trafficking networks and the Mexican drug war. *The American Economic Review*, 105, 1738–1779.
- DeMichele, M. (2014). Electronic monitoring: It is a tool, not a silver bullet. *Criminology & Public Policy*, 13, 393.
- Deuchar, R. (2012). The impact of curfews and electronic monitoring on the social strains, support and capital experienced by youth gang members and offenders in the west of Scotland. *Criminology & Criminal Justice*, 12, 113–128.
- Di Tella, R., & Schargrodsky, E. (2004). Do police reduce crime? Estimates using the allocation of police forces after a terrorist attack. *The American Economic Review*, 94, 115–133.
- Donohue III, J. J., & Levitt, S. D. (2001). The impact of legalized abortion on crime. *The Quarterly Journal of Economics*, 116, 379–420.
- Durlauf, S. N., & Nagin, D. S. (2011). Imprisonment and crime: Can both be reduced? *Criminology & Public Policy*, 10, 13–54.
- Eck, J. E. (1993). The threat of crime displacement. In *Criminal Justice Abstracts*, Volume 25, pp. 527–546.
- Ehrensaft, M. K., Cohen, P., Brown, J., Smailes, E., Chen, H., & Johnson, J. G. (2003). Intergenerational transmission of partner violence: A 20-year prospective study. *Journal of Consulting and Clinical Psychology*, 71, 741.
- Engel, R. S., Tillyer, M. S., & Corsaro, N. (2013). Reducing gang violence using focused deterrence: Evaluating the Cincinnati Initiative to Reduce Violence (cirv). *Justice Quarterly*, 30, 403–439.



- Espinosa, V., & Rubin, D. B. (2015). Did the military interventions in the Mexican drug war increase violence? *The American Statistician*, 69, 17–27.
- Evans, W. N., & Owens, E. G. (2007). Cops and crime. *Journal of Public Economics*, 91, 181–201.
- Farrell, G., & Birks, D. (2018). Did cybercrime cause the crime drop? *Crime Science*, 7, 1–4.
- Farrell, G., Tseloni, A., Mailley, J., & Tilley, N. (2011). The crime drop and the security hypothesis. *Journal of Research in Crime and Delinquency*, 48, 147–175.
- Fox, A. M., Katz, C. M., Choate, D. E., & Hedberg, E. C. (2015). Evaluation of the Phoenix Truce Project: A replication of Chicago Ceasefire. *Justice Quarterly*, 32, 85–115.
- Fritsch, E. J., Caeti, T. J., & Taylor, R. W. (1999). Gang suppression through saturation patrol, aggressive curfew, and truancy enforcement: A quasi-experimental test of the Dallas anti-gang initiative. *Crime & Delinquency*, 45, 122–139.
- Fryer Jr., R. G., Heaton, P. S., Levitt, S. D., & Murphy, K. M. (2013). Measuring crack cocaine and its impact. *Economic Inquiry*, 51, 1651–1681.
- Gelber, A., Isen, A., & Kessler, J. B. (2016). The effects of youth employment: Evidence from New York City lotteries. *The Quarterly Journal of Economics*, 131, 423–460.
- Gelman, A., Fagan, J., & Kiss, A. (2007). An analysis of the New York City Police Department's "stop-and-frisk" policy in the context of claims of racial bias. *Journal of the American Statistical Association*, 102, 813–823.
- Goel, S., Rao, J. M., & Shroff, R. (2016). Precinct or prejudice? Understanding racial disparities in New York City's stop-and-frisk policy. *The Annals of Applied Statistics*, 10, 365–394.
- Goldstein, J., & Goodman, J. D. (2013). Frisking tactic yields to a focus on youth gangs. *The New York Times*, September 18, 2013.
- Goncalves, F., & Mello, S. (2017). *A few bad apples? Racial bias in policing*. Industrial Relations. Princeton, NJ: Princeton University.
- Goodman-Bacon, A. (2018). *Difference-in-differences with variation in treatment timing*. Technical report. Cambridge, MA: National Bureau of Economic Research.
- Griffiths, E., & Tita, G. (2009). Homicide in and around public housing: Is public housing a hotbed, a magnet, or a generator of violence for the surrounding community? *Social Problems*, 56, 474–493.
- Groff, E. R., Ratcliffe, J. H., Haberman, C. P., Sorg, E. T., Joyce, N. M., & Taylor, R. B. (2015). Does what police do at hot spots matter? The Philadelphia policing tactics experiment. *Criminology*, 53, 23–53.
- Grogger, J. (2002). The effects of civil gang injunctions on reported violent crime: Evidence from Los Angeles County. *The Journal of Law and Economics*, 45, 69–90.
- Guerette, R. T., & Bowers, K. J. (2009). Assessing the extent of crime displacement and diffusion of benefits: A review of situational crime prevention evaluations. *Criminology*, 47, 1331–1368.
- Hagan, J., & Dinovitzer, R. (1999). Collateral consequences of imprisonment for children, communities, and prisoners. *Crime and Justice*, 26, 121–162.
- Harcourt, B. E., & Ludwig, J. (2006). Broken windows: New evidence from New York City and a five-city social experiment. *The University of Chicago Law Review*, 271–320.
- Heller, S. B. (2014). Summer jobs reduce violence among disadvantaged youth. *Science*, 346, 1219–1223.
- Heller, S. B., Shah, A. K., Guryan, J., Ludwig, J., Mullainathan, S., & Pollack, H. A. (2017). Thinking, fast and slow? Some field experiments to reduce crime and dropout in Chicago. *The Quarterly Journal of Economics*, 132, 1–54.
- Hennigan, K. M., & Sloane, D. (2013). Improving civil gang injunctions: How implementation can affect gang dynamics, crime, and violence. *Criminology & Public Policy*, 12, 7–41.
- Howell, K. B. (2009). Broken lives from broken windows: The hidden costs of aggressive order-maintenance policing. *NYU Review of Law & Social Change*, 33, 271.



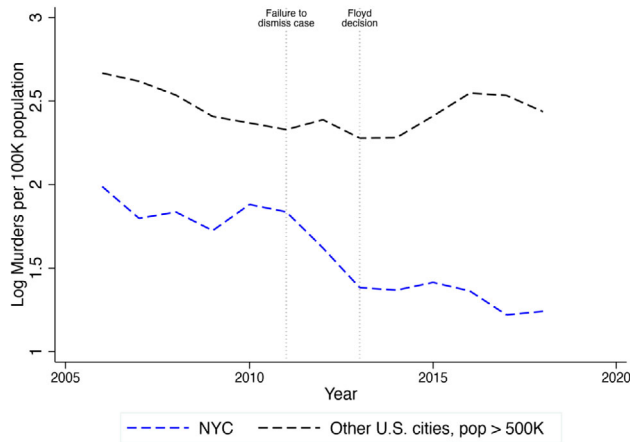
- Howell, K. B. (2015). Gang policing: The post stop-and-frisk justification for profile-based policing. *University of Denver Law Review*, 5, 1.
- Howell, K. B. (2018). Prosecutorial misconduct: Mass gang indictments and inflammatory statements. *Dickinson Law Review*, 123, 691.
- Hyslop, D. R., & Imbens, G. W. (2001). Bias from classical and other forms of measurement error. *Journal of Business & Economic Statistics*, 19, 475–481.
- Johnson, S. D., & Bowers, K. J. (2008). Stable and fluid hotspots of crime: Differentiation and identification. *Built Environment*, 34, 32–45.
- Kaplan, J., & Chalfin, A. (2019). More cops, fewer prisoners? *Criminology & Public Policy*, 18, 171–200.
- Kelling, G. L., & Sousa, W. H. (2001). Do police matter? An analysis of the impact of New York City's police reforms. New York, NY: CCI Center for Civic Innovation at the Manhattan Institute.
- Kennedy, D. M., Braga, A. A., & Piehl, A. M. (2001). Developing and implementing operation ceasefire. In *Reducing gun violence: The Boston gun project's Operation Ceasefire*, 5–54. Washington, DC: National Institute of Justice.
- Klick, J., & Tabarrok, A. (2005). Using terror alert levels to estimate the effect of police on crime. *The Journal of Law and Economics*, 48, 267–279.
- Kohler-Hausmann, I. (2018). *Misdemeanorland: Criminal courts and social control in an age of broken windows policing*. Princeton, NJ: Princeton University Press.
- Lafree, G. (2000). The crime drop in America. *Journal of Criminal Law and Criminology*, 91, 269–269.
- Lancaster, T. (2000). The incidental parameter problem since 1948. *Journal of Econometrics*, 95, 391–413.
- Lee, J., Quraishi, S. A., Bhatnagar, S., Zafonte, R. D., & Masiakos, P. T. (2014). The economic cost of firearm-related injuries in the United States from 2006 to 2010. *Surgery*, 155, 894–898.
- Lee, Y., Eck, J. E., & Corsaro, N. (2016). Conclusions from the history of research into the effects of police force size on crime—1968 through 2013: A historical systematic review. *Journal of Experimental Criminology*, 12, 431–451.
- Leovy, J. (2015). *Ghettoside: A true story of murder in America*. New York, NY: Spiegel & Grau.
- Levitt, S. D. (1996). The effect of prison population size on crime rates: Evidence from prison overcrowding litigation. *The Quarterly Journal of Economics*, 111, 319–351.
- Lipsky, M. (1971). Street-level bureaucracy and the analysis of urban reform. *Urban Affairs Quarterly*, 6, 391–409.
- Loftin, C., & McDowall, D. (2010). The use of official records to measure crime and delinquency. *Journal of Quantitative Criminology*, 26, 527–532.
- Ludwig, J., & Cook, P. J. (2001). The benefits of reducing gun violence: Evidence from contingent-valuation survey data. *Journal of Risk and Uncertainty*, 22, 207–226.
- MacDonald, J., Fagan, J., & Geller, A. (2016). The effects of local police surges on crime and arrests in New York City. *PLoS one*, 11(6).
- MacDonald, J. M., Klick, J., & Grunwald, B. (2016). The effect of private police on crime: Evidence from a geographic regression discontinuity design. *Journal of the Royal Statistical Society: Series A (Statistics in Society)*, 179, 831–846.
- MacDonald, J. M., & Stokes, R. J. (2020). Gentrification, land use, and crime. *Annual Review of Criminology*, 3, 121–138.
- McGarrell, E. F., Chermak, S., Wilson, J. M., & Corsaro, N. (2006). Reducing homicide through a “lever-pulling” strategy. *Justice Quarterly*, 23, 214–231.
- McVey, E., Duchesne, J. C., Sarlati, S., O’Neal, M., Johnson, K., & Avegno, J. (2014). Operation Ceasefire—New Orleans: An infectious disease model for addressing community recidivism from penetrating trauma. *Journal of Trauma and Acute Care Surgery*, 77, 123–128.

- Mello, S. (2019). More cops, less crime. *Journal of Public Economics*, 172, 174–200.
- Messner, S. F., Galea, S., Tardiff, K. J., Tracy, M., Bucciarelli, A., Piper, T. M., Frye, V., & Vlahov, D. (2007). Policing, drugs, and the homicide decline in New York City in the 1990s. *Criminology*, 45, 385–414.
- Mueller, B., & Baker, A. (2017). Drop in gang violence drove New York City shootings below 1,000 in 2016. *The New York Times*, January 3, 2017.
- Muniz, A. (2014). Maintaining racial boundaries: Criminalization, neighborhood context, and the origins of gang injunctions. *Social Problems*, 61, 216–236.
- Nagin, D. S. (2013). Deterrence in the twenty-first century. *Crime and Justice*, 42, 199–263.
- Owens, E. G. (2013). *Cops and cuffs. Lessons from the economics of crime: What reduces offending?* Cambridge, MA: MIT Press.
- Owens, E., Mioduszewski, M. D., & Bates, C. J. (2019). How valuable are civil liberties? Evidence from gang injunctions, crime, and housing prices in Southern California. Unpublished draft, Department of Criminology, Law and Society and Department of Economics, University of California, Irvine.
- Papachristos, A. V., Meares, T. L., & Fagan, J. (2007). Attention felons: Evaluating Project Safe Neighborhoods in Chicago. *Journal of Empirical Legal Studies*, 4, 223–272.
- Papachristos, A. V., Smith, C. M., Scherer, M. L., & Fugiero, M. A. (2011). More coffee, less crime? The relationship between gentrification and neighborhood crime rates in Chicago, 1991 to 2005. *City & Community*, 10, 215–240.
- Patton, D. U., Brunton, D.-W., Dixon, A., Miller, R. J., Leonard, P., & Hackman, R. (2017). Stop and frisk online: Theorizing everyday racism in digital policing in the use of social media for identification of criminal conduct and associations. *Social Media + Society*, 3(3).
- Picard-Fritsche, S., & Cerniglia, L. (2013). Testing a public health approach to gun violence: An evaluation of Crown Heights Save Our Streets, a replication of the Cure Violence model. New York, NY: Center for Court Innovation.
- Piquero, A. R., & Blumstein, A. (2007). Does incapacitation reduce crime? *Journal of Quantitative Criminology*, 23, 267–285.
- Raphael, S., & Ludwig, J. (2003). Prison sentence enhancements: The case of Project Exile. *Evaluating Gun Policy: Effects on Crime and Violence*, 251, 274–277.
- Ratcliffe, J. H. (2004). The hotspot matrix: A framework for the spatio-temporal targeting of crime reduction. *Police Practice and Research*, 5, 5–23.
- Reppetto, T. A. (1976). Crime prevention and the displacement phenomenon. *Crime & Delinquency*, 22, 166–177.
- Reyes, J. W. (2007). Environmental policy as social policy? The impact of childhood lead exposure on crime. *The BE Journal of Economic Analysis & Policy*, 7(1).
- Ridgeway, G., Grogger, J., Moyer, R. A., & MacDonald, J. M. (2019). Effect of gang injunctions on crime: A study of Los Angeles from 1988–2014. *Journal of Quantitative Criminology*, 35, 517–541.
- Ríos, V. (2013). Why did Mexico become so violent? A self-reinforcing violent equilibrium caused by competition and enforcement. *Trends in Organized Crime*, 16, 138–155.
- Rosenfeld, R., Fornango, R., & Baumer, E. (2005). Did Ceasefire, CompStat, and Exile reduce homicide? *Criminology & Public Policy*, 4, 419–449.
- Sampson, R. J. (2008). Rethinking crime and immigration. *Contexts*, 7, 28–33.
- Saunders, J., Hunt, P., & Hollywood, J. S. (2016). Predictions put into practice: A quasi-experimental evaluation of Chicago's predictive policing pilot. *Journal of Experimental Criminology*, 12, 347–371.
- Sharkey, P. (2010). The acute effect of local homicides on children's cognitive performance. *Proceedings of the National Academy of Sciences*, 107, 11733–11738.
- Sharkey, P. (2018). The long reach of violence: A broader perspective on data, theory, and evidence on the prevalence and consequences of exposure to violence. *Annual Review of Criminology*, 1, 85–102.

- Sharkey, P., Schwartz, A. E., Ellen, I. G., & Lacoë, J. (2014). High stakes in the classroom, high stakes on the street: The effects of community violence on student's standardized test performance. *Sociological Science*, 1, 199.
- Shea, D. (2018). Criminal group database is vital tool to controlling gang violence. *The New York Daily News*, June 12, 2018.
- Shepherd, J., & Sivarajasingam, V. (2005). Injury research explains conflicting violence trends. *Injury Prevention*, 11, 324–325.
- Sherman, L. W., Gartin, P. R., & Buerger, M. E. (1989). Hot spots of predatory crime: Routine activities and the criminology of place. *Criminology*, 27, 27–56.
- Sherman, L. W., & Weisburd, D. (1995). General deterrent effects of police patrol in crime “hot spots”: A randomized, controlled trial. *Justice Quarterly*, 12, 625–648.
- Slutkin, G., Ransford, C., & Decker, R. B. (2015). Cure violence: Treating violence as a contagious disease. In *Envisioning Criminology*, pp. 43–56. New York, NY: Springer.
- Smith, K. (2018). We were wrong about stop-and-frisk. *The National Review*, January 1, 2018.
- Speri, A. (2018). New York gang database expanded by 70 percent under Mayor Bill de Blasio. *The Intercept*, June 11, 2018.
- Sullivan, C. M., & O’Keeffe, Z. P. (2017). Evidence that curtailing proactive policing can reduce major crime. *Nature Human Behaviour*, 1, 730–737.
- Taylor, B., Koper, C. S., & Woods, D. J. (2011). A randomized controlled trial of different policing strategies at hot spots of violent crime. *Journal of Experimental Criminology*, 7, 149–181.
- Trujillo, J., & Vitale, A. S. (2019). Gang takedowns in the de Blasio era: The dangers of “precision policing.” *The Policing and Social Justice Project*, Brooklyn College.
- Tucek, A. (2018). Constraining big brother: The legal deficiencies surrounding Chicago’s use of the strategic subject list. *Chicago, IL: University of Chicago Legal Forum*, 427.
- Walsh, W. F. (2001). Compstat: An analysis of an emerging police managerial paradigm. *Policing: An International Journal of Police Strategies & Management*, 24, 347–362.
- Webster, D. W., Whitehill, J. M., Vernick, J. S., & Curriero, F. C. (2013). Effects of Baltimore’s Safe Streets program on gun violence: A replication of Chicago’s ceasefire program. *Journal of Urban Health*, 90, 27–40.
- Weisburd, D. (2005). Hot spots policing experiments and criminal justice research: Lessons from the field. *The Annals of the American Academy of Political and Social Science*, 599, 220–245.
- Weisburd, D. (2015). The law of crime concentration and the criminology of place. *Criminology*, 53, 133–157.
- Weisburd, D., Groff, E. R., & Yang, S.-M. (2014). Understanding and controlling hot spots of crime: The importance of formal and informal social controls. *Prevention Science*, 15, 31–43.
- Weisburd, D., Mastrofski, S. D., McNally, A. M., Greenspan, R., & Willis, J. J. (2003). Reforming to preserve: Compstat and strategic problem solving in American policing. *Criminology & Public Policy*, 2, 421–456.
- Weisburd, D., Telep, C. W., Hinkle, J. C., & Eck, J. E. (2010). Is problem-oriented policing effective in reducing crime and disorder? Findings from a Campbell systematic review. *Criminology & Public Policy*, 9, 139–172.
- Weisburd, D., Telep, C. W., & Lawton, B. A. (2014). Could innovations in policing have contributed to the New York City crime drop even in a period of declining police strength? The case of stop, question, and frisk as a hot spots policing strategy. *Justice Quarterly*, 31, 129–153.
- Weisburd, D., Wyckoff, L. A., Ready, J., Eck, J. E., Hinkle, J. C., & Gajewski, F. (2006). Does crime just move around the corner? A controlled study of spatial displacement and diffusion of crime control benefits. *Criminology*, 44, 549–592.
- Weisburd, S. (2019). Police presence, rapid response rates, and crime prevention. *The Review of Economics and Statistics*, December 2019, 1–45.

- Weisburst, E. K. (2019). Safety in police numbers: Evidence of police effectiveness from federal COPS grant applications. *American Law and Economics Review*, 21, 81–109.
- Weitzer, R., Tuch, S. A., & Skogan, W. G. (2008). Police-community relations in a majority-Black city. *Journal of Research in Crime and Delinquency*, 45, 398–428.
- Wooldridge, J. M. (2002). *Econometric analysis of cross section and panel data*. Cambridge, MA: MIT Press, 108.
- Young, A. (2019). Channeling Fisher: Randomization tests and the statistical insignificance of seemingly significant experimental results. *The Quarterly Journal of Economics*, 134, 557–598.
- Zimring, F. E. (2008). *The great American crime decline*. Oxford, UK: Oxford University Press.
- Zimring, F. E. (2011). *The city that became safe: New York's lessons for urban crime and its control*. Oxford, UK: Oxford University Press.

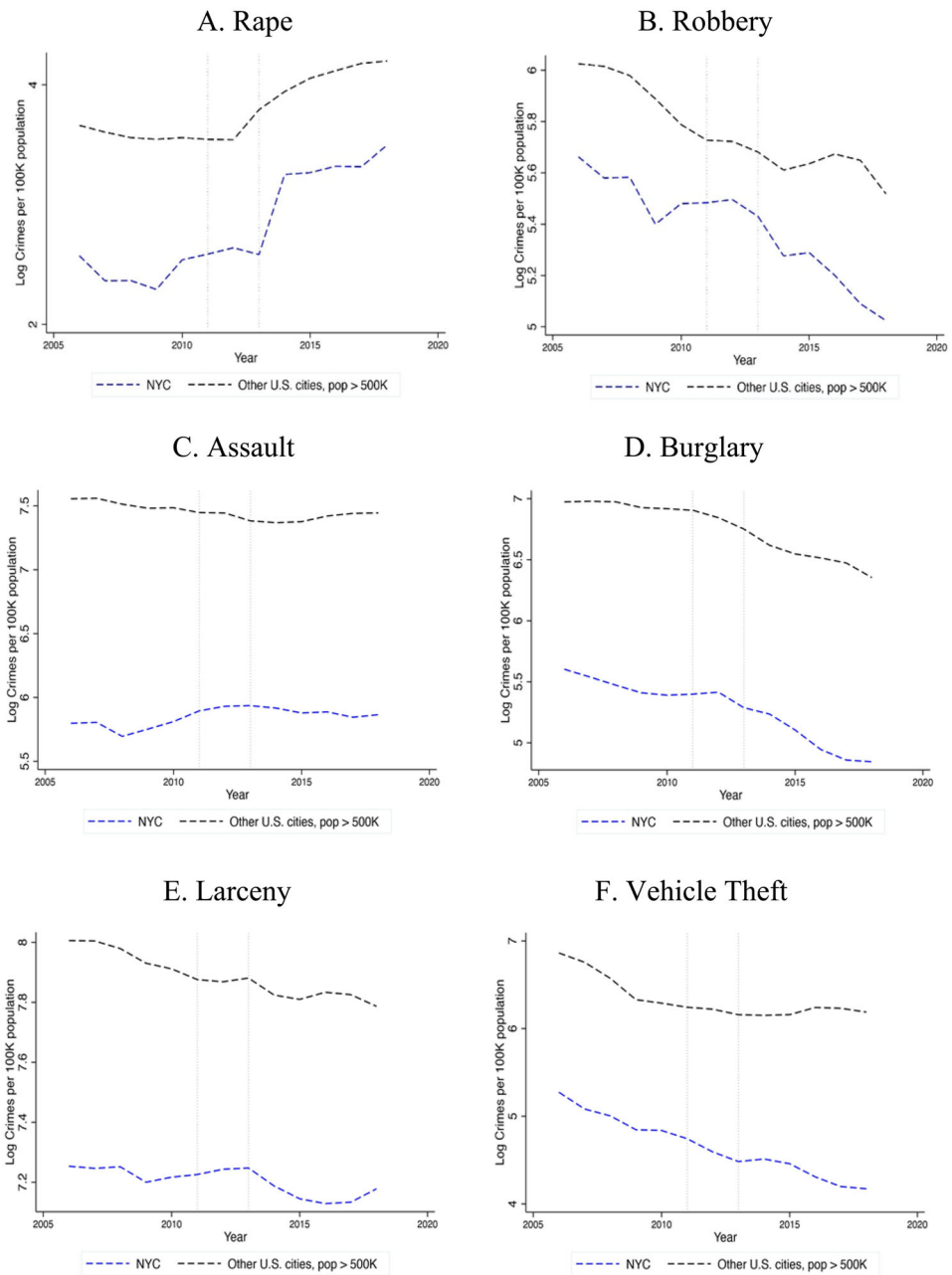
## APPENDIX



Notes: Figure plots log murders per 100,000 population in New York City and in other U.S. cities with populations exceeding 500,000 in each year from 2006 until 2018. Data were accessed from Jacob Kaplan’s “Crime Data Tool” at the following URL: <https://jacobdkaplan.com/>. In the figure, there are vertical lines corresponding to 2011, the year that a federal court failed to dismiss the *Floyd* case in a preliminary hearing and 2013, the year the *Floyd* case was decided.

**Figure A1.** Log Murders per 100,000 Population, New York City vs. Other U.S. Cities (2006 to 2018).

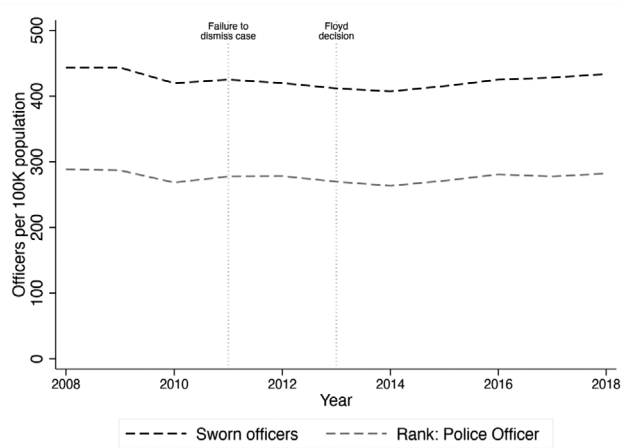
## Can Precision Policing Reduce Gun Violence?



Notes: Figure plots log crimes per 100,000 population in New York City and in other U.S. cities with populations exceeding 500,000 in each year from 2006 until 2018. Data were accessed from Jacob Kaplan's "Crime Data Tool" at the following URL: <https://jacobdkaplan.com/>. In the figure, there are vertical lines corresponding to 2011, the year that a federal court failed to dismiss the *Floyd* case in a preliminary hearing and 2013, the year the *Floyd* case was decided.

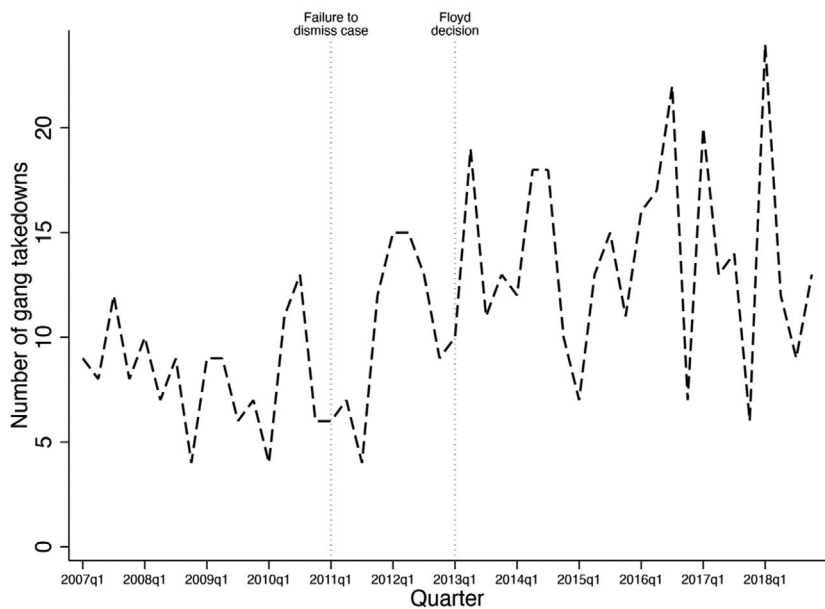
**Figure A2.** Log Crimes per 100,000 Population, New York City vs. Other U.S. Cities (2006 to 2018).





Notes: Figure plots the number of sworn police officers per 100,000 population in New York City and in the United States from 1960 until 2018. Data were obtained from the New York Police Department's Annual Crime and Enforcement Reports, accessed using the following URL: <https://www1.nyc.gov/site/nypd/stats/reports-analysis/crime-enf.page>. In the figure, there are vertical lines corresponding to 2011, the year that a federal court failed to dismiss the *Floyd* case in a preliminary hearing and 2013, the year the *Floyd* case was decided.

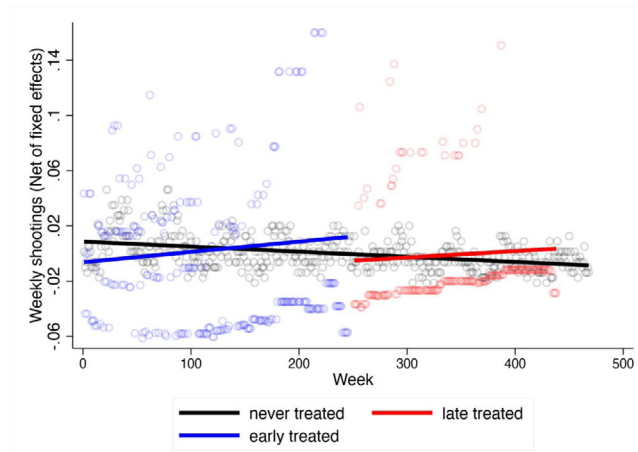
**Figure A3.** Trends in Sworn Police Officers per 100,000 Population, New York City (2008 to 2018).



Notes: Figure plots the number of gang takedowns by quarter as proxied by two or more conspiracy arrests in a given NYCHA development-week. In the figure there are vertical lines corresponding to 2011, the year that a federal court failed to dismiss the *Floyd* case in a preliminary hearing and 2013, the year the *Floyd* case was decided.

**Figure A4.** Trends in Gang Takedowns—Quarterly Data, New York City (2008 to 2018).

## Can Precision Policing Reduce Gun Violence?

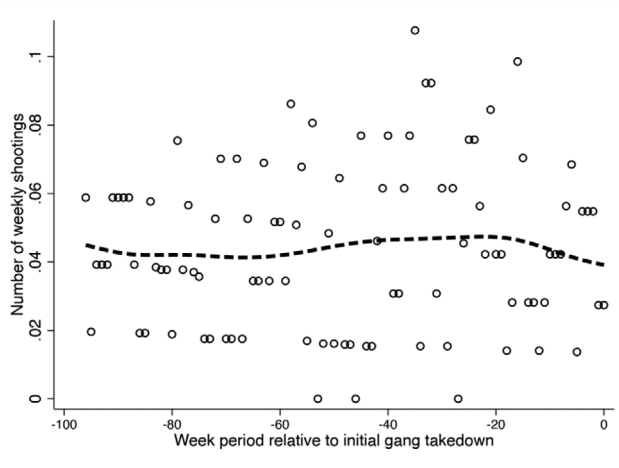


*Notes:* Figure plots the number of weekly shootings in the pre-treatment period, residualized to remove NYCHA development fixed effects, separately for three groups of developments: 1) never treated developments, 2) developments whose initial gang takedown occurs early in the data (i.e., before week 250), and 3) developments whose initial gang takedown occurs late in the data (i.e., after week 250). For each group, a trend line is drawn through the data. The never-treated group is plotted using the black line, the late-treated group is plotted using the red line, and the early-treated group is plotted using the blue line. Consistent with subsequent models, the ever-treated groups are plotted using the time periods that lie within a bandwidth of two years of the time of a development's initial gang takedown. As is apparent from the figure, the early- and late-treated developments follow trends that are very close to parallel, making the ever-treated developments a good comparison group for one another. The never-treated developments, on the other hand, experience substantially more negative time trends. Accordingly, they are a poorly chosen counterfactual for the treated developments, and we exclude them from the data.

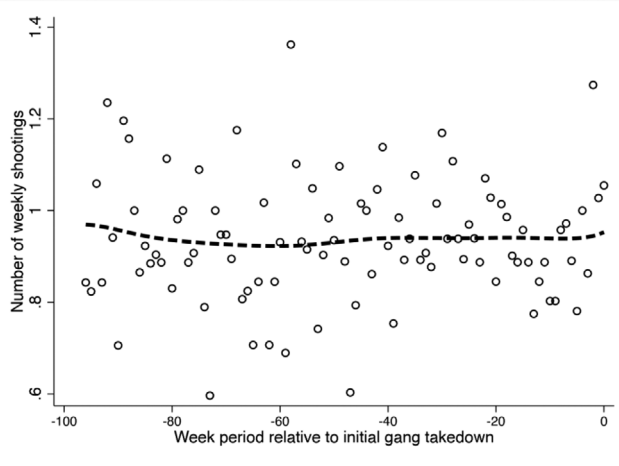
**Figure A5.** Test of Parallel Trends: Never Treated, Early Treated, and Late Treated Developments (Shootings).

## Can Precision Policing Reduce Gun Violence?

Panel A: Shootings



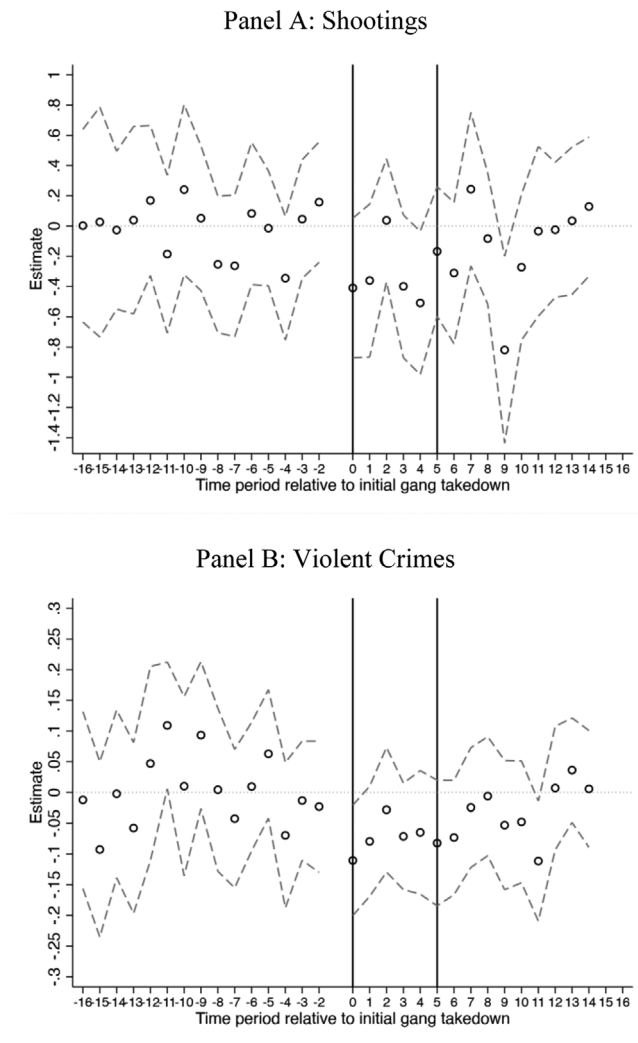
Panel B: Violent Crimes



Notes: Figure plots the number of weekly shootings (panel A) and violent crimes (panel B) by week relative to a development's first gang takedown. A Lowess smoother is drawn through the data.

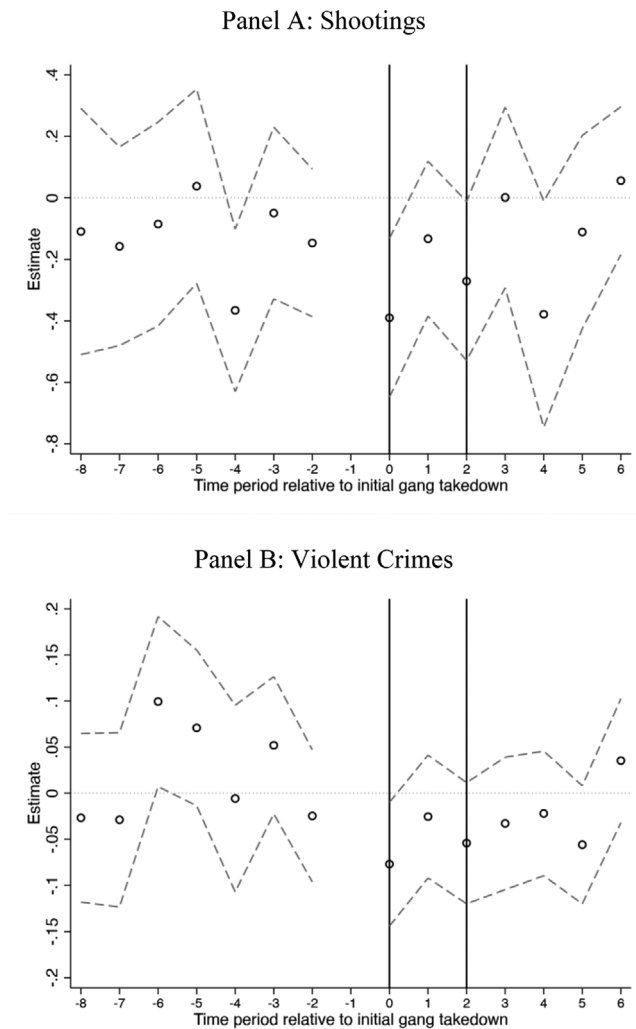
**Figure A6.** Analysis of Pre-Treatment Trends (Weekly Shootings).

## Can Precision Policing Reduce Gun Violence?



*Notes:* Figure plots coefficients from the event study regression for weekly shootings (panel A) and weekly violent crimes (panel B). Each estimate represents a three-month bin, relative to a NYCHA development's initial gang takedown. For each three-month bin, the point estimate is the coefficient from a Poisson regression of the number of weekly crimes on the event study terms, conditional on week and NYCHA development fixed effects. Estimates are relative to the first time period prior to the intervention. Standard errors are clustered at the NYCHA development to account for heteroskedasticity as well as arbitrary serial correlation. The vertical line at  $t = 0$  represents the first three-month post-period. The vertical line at  $t = 5$  corresponds with the period ending 18 months after a gang takedown.

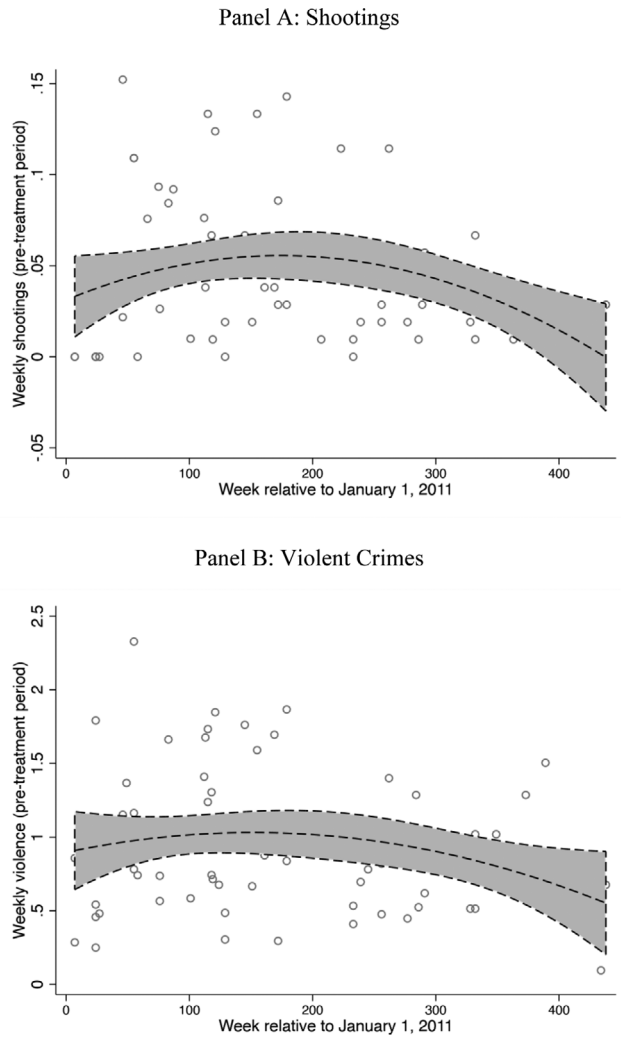
**Figure A7.** Event Study Analysis, Quarterly Data.



*Notes:* Figure plots coefficients from the event study regression described in equation (3) for weekly shootings (panel A) and weekly violent crimes (panel B). Each estimate represents a six-month bin, relative to a NYCHA development's initial gang takedown. For each six-month bin, the point estimate is the coefficient from a Poisson regression of the number of weekly crimes on the event study terms, conditional on week and NYCHA development fixed effects. Estimates are relative to the first time period prior to the intervention. Standard errors are clustered at the NYCHA development to account for heteroskedasticity as well as arbitrary serial correlation. The vertical line at  $t = 0$  represents the first six-month post-period. The vertical line at  $t = 2$  corresponds with the period ending 18 months after a gang takedown.

**Figure A8.** Event Study Analysis, Including Non-Treated Developments.

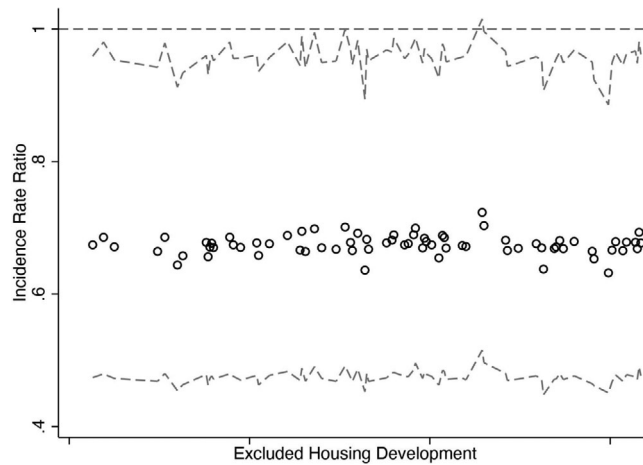
## Can Precision Policing Reduce Gun Violence?



*Notes:* Figure plots the number of weekly shootings (panel A) and weekly violence (panel B) against the timing of a housing development's initial gang takedown. A quadratic best fit curve is drawn through the data. Data are plotted only for each development's pre-treatment period.

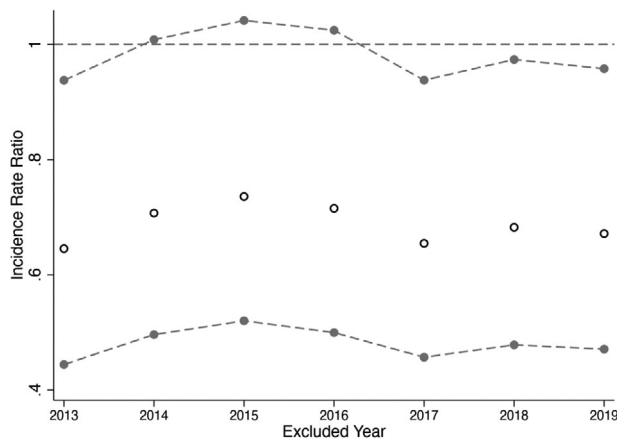
**Figure A9.** Exogeneity of the Timing of the Initial Gang Takedown.





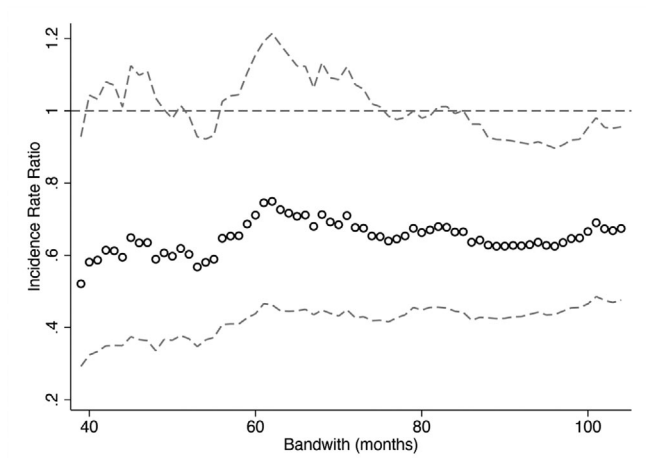
*Notes:* Figure plots regression estimates (y-axis) for a series of Poisson regressions in which we regress the count of weekly shootings on the treatment indicator and NYCHA development and week-year fixed effects. In each regression, a different housing development is omitted from the data. Coefficients are plotted using the white circles; 95 percent confidence intervals are plotted using the dashed gray lines.

**Figure A10.** Sensitivity of Estimated Treatment Effects to the Removal of a Given Housing Development (Shootings).



*Notes:* Figure plots regression estimates (y-axis) for a series of Poisson regressions in which we regress the count of weekly shootings on the treatment indicator and NYCHA development and week-year fixed effects. Each model is run excluding gang takedowns that occur in a given year. Coefficients are plotted using the white circles; 95 percent confidence intervals are plotted using the dashed gray lines.

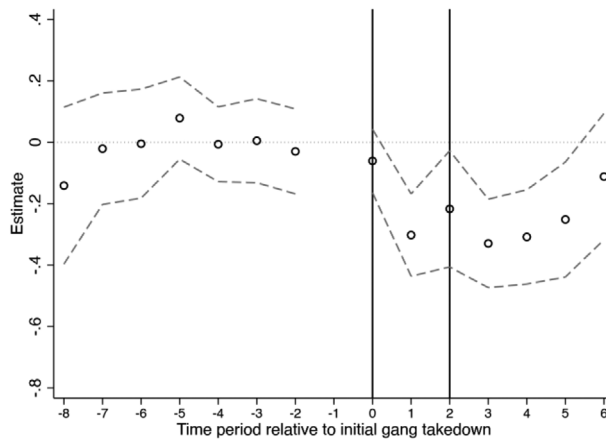
**Figure A11.** Sensitivity of Estimated Treatment Effects to the Treatment Period (Shootings).



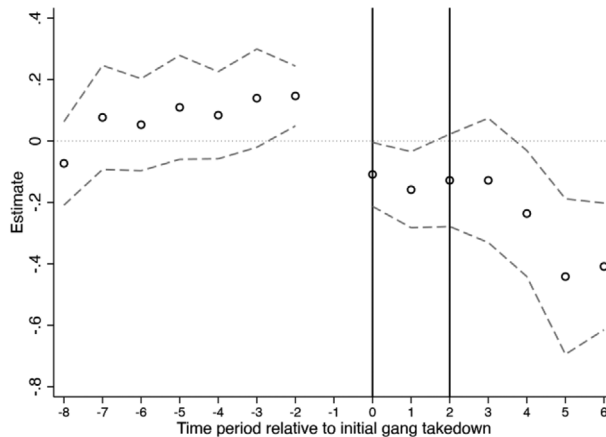
*Notes:* Figure plots incidence rate ratios for a series of Poisson regressions in which we regress the count of weekly shootings on the treatment indicator and NYCHA development and week-year fixed effects. In each regression, a different bandwidth is employed. Coefficients are plotted using the white circles; 95 percent confidence intervals are plotted using the dashed gray lines.

**Figure A12.** Bandwidth Sensitivity (Shootings).

Panel A: Marijuana Possession Arrests



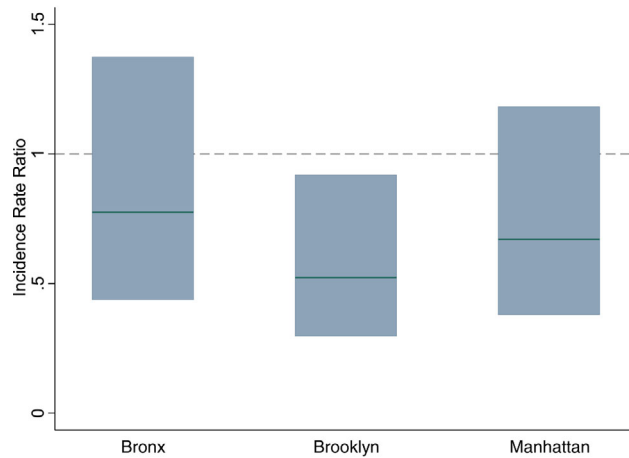
Panel B: Street Stops



*Notes:* Figures plot coefficients from the event study regression described in equation (3). Each estimate represents a six-month bin, relative to a NYCHA development's first gang takedown. For each six-month bin, the point estimate is the coefficient from a Poisson regression of the number of weekly marijuana possession arrests (panel A) or weekly street stops (panel B) on the event study terms, conditional on NYCHA development and week fixed effects. Standard errors are clustered at the NYCHA development to account for heteroskedasticity as well as arbitrary serial correlation. The vertical line at  $t = 0$  represents the first six-month post-period. The vertical line at  $t = 2$  corresponds with the period ending 18 months after a gang takedown.

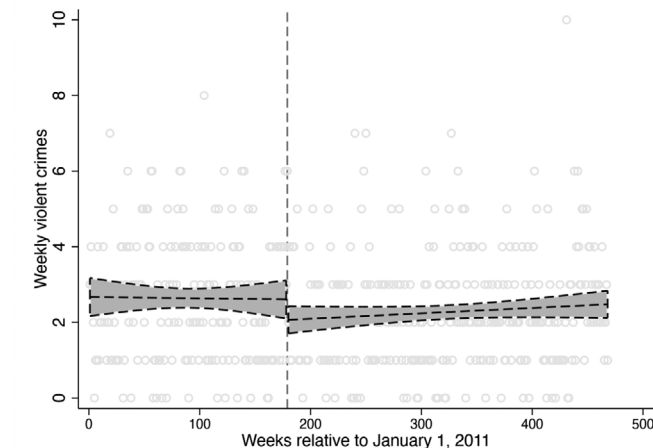
**Figure A13.** Event Study Analysis (Discretionary Police Enforcement).

## Can Precision Policing Reduce Gun Violence?



*Notes:* Figure plots incidence rate ratios and 95 percent confidence intervals from Poisson regressions in which we regress the count of weekly shootings on the treatment indicator and NYCHA development and week-year fixed effects. The model is estimated separately for Manhattan, Brooklyn, and the Bronx, the three boroughs with a sufficient number of gang takedowns.

**Figure A14.** Estimates by Borough (Shootings).



*Notes:* Figure plots the weekly number of violent crimes in Grant and Manhattanville Houses, two public housing developments in Manhattan that, on June 5th, 2014, experienced the largest gang takedown in NYC history—see <https://www.dnainfo.com/new-york/20140605/west-harlem/harlem-gang-takedown-is-largest-city-history-officials-say/>. The raw data are plotted using the gray open circles. A best fit line and the associated 95 percent confidence interval are drawn through the data separately for the pre- and post-takedown periods. The horizontal reference line at week 179 represents the time of the gang takedown.

**Figure A15.** Effect of the “Largest Gang Takedown in NYC History,” June 2014.